
LEMPERTZ

1845

Netsuke, Inro and Sagemono
from European Collections
including the Kolodotschko
Collection of Netsuke VI
7 June 2019 Cologne
Lempertz Auction 1136





—
LEMPERTZ
1845

Netsuke, Inro and Sagemono
from European Collections
including the Kolodotschko
Collection of Netsuke VI
7 June 2019 Cologne
Lempertz Auction 1136



Preview

Cologne

Saturday 1 June, 10 am – 4 pm

Sunday 2 June, 11 am – 4 pm

Monday 3 – Wednesday 5 June, 10 am – 5.30 pm

Thursday 6 June, 10 am – 4 pm

Sale

Cologne

Friday 7 June 2019

ca. 3 pm

Netsuke, Inro and Sagemono
from European Collections
including the Kolodotschko
Collection of Netsuke VI
Lot 250 – 499

The auction will be streamed live at www.lempertz.com

Please note that objects containing protected materials, such as ivory,
require a CITES licence for export outside of EU contract country.
We would like to inform you that such licenses are usually not granted.



Welcome to our latest netsuke and sagemono catalogue. We hope you will find objects of interest which will enrich your collection.

The catalogue commences with 117 netsuke from the Kolodotschko Collection. We have been privileged to offer this impressive collection in single-owner catalogues over the past five years and this sale encompasses the sixth part of probably the largest netsuke collection in the world at present. The collector's leitmotif was as simple as it was complex – good luck. Gods of good luck, dragons and shishi once again form the core of this selection and due to the monothematic nature, are arranged chronologically rather than by motif.

Following on from the Kolodotschko Collection, we have a small but very fine group of eight netsuke from the estate of Josef Kanehls (1913–1989), former sales manager in the metal-recycling company Lindemann, based in Düsseldorf. In the matter of cotton press machines, Kanehls travelled to Japan in the 1950s and 1960s where his interest for netsuke probably took seed. Whether he purchased the netsuke in Japan itself or in Europe is, however, unknown.

The auction also features 41 netsuke from the collection of Gertrud Papp (1920–2017). Following the successful sale of the first two parts, we are now putting up for auction the third and final part of this varied collection featuring unusual representations, with animal motifs taking precedence this season.

We are furthermore pleased to present twelve netsuke from the well-known collection of Dr. Karl M. Schwarz (1926–2007) from Vienna. His comprehensive collection forms the basis of his three publications on subject matter in netsuke, which have become extremely useful and sought-after reference works. Trudel Klefisch contributed the catalogue entries for these pieces.

An interesting group of 20 netsuke comes from a Munich private collection, acquired with expertise and a good eye from private collections and auctions over the decades, while the international aspect of netsuke collecting is represented by a 14-strong selection from a Parisian consignor encompassing a variegated group of katabori pieces and manjû.

The sale will be rounded up by netsuke from various owners. We are proud to say we have been entrusted with netsuke from no less than seven countries. Also featured in this catalogue are the sagemono, without which the netsuke would be unthinkable. Kiseruzutsu (pipecases), tonkotsu (tobacco containers) and inrô complete our offer.

Irrespective from which collection your next piece will be chosen, we hope you enjoy studying our catalogue and look forward to welcoming you at our previews and auctions.

The Kolodotschko Collection of Netsuke VI

Lot 250 – 366



250 **An ivory netsuke of a rakan, possibly Shubaka Sonja.** 17th/18th century

Seated on a flat rock with one leg pendant, the left hand on his raised leg, and resting his arm on the shishi next to him. Age cracks. Height 5 cm

€ 300 – 400

250

251 **An ivory netsuke of a Chinese scholar.**
18th century

Seated at ease on the back of a large recumbent shishi, resting his left arm on the shishi's raised head, on an oblong flat base. Age cracks.
Height 4.4 cm

Provenance
Nagel, 13.11.2007, lot 3244

€ 700 – 900



251

252 **An ivory netsuke of a Chinese scholar.**
18th century

The bearded scholar sits on a flat base resting his head on his arms placed on a Chinese table.
Height 3.8 cm

€ 250 – 350



252



253

253 A finely carved ivory netsuke of a Chinnan Sennin. Late 18th century

Standing on one leg, with a wide grin on his face, holding up an alms bowl on his left shoulder. The bowl's top carved with a swirl possibly symbolising a dragon inside. A few age cracks.

Height 7.5 cm

€ 700 – 900



254

254 A large Kyoto school ivory netsuke of Gama Sennin. Second half 18th century

Standing on one foot, the other leg raised, the sennin supports a huge three-legged toad on his shoulder, his robes engraved with a cloud pattern. The eye pupils of the toad of brownish-black horn.

Height 8.9 cm

Provenance

Sotheby's, London, 17.5.2007, lot 799

€ 900 – 1.200



255

255 A Kyoto school ivory netsuke of Hotei with a karako. Around 1800

Standing upright with a stiff fan in his right hand and supporting a karako on his back. Hotei's garment crosshatched and stained with black ink for effect.

Height 6.7 cm

Provenance

Christie's, Amsterdam, 28.9.2000

€ 800 – 1.200



256



257



258

256 A fine Kyoto school ivory netsuke of Gama Sennin, by Yoshinaga. Late 18th century

Seated pot-bellied in a patterned robe and propped up on his right arm, a three-legged toad sitting on his raised left hand. All four eye pupils of brown horn. Signed Yoshinaga in a square reserve. Left foot damaged. Height 4.4 cm; width 5.6 cm

€ 800 – 1.200

257 A Kyoto school ivory netsuke of Fukurokuju with a long beard. Late 18th/early 19th century

Seated propped up on his right arm, the left hand placed on his knee. Height 4.1 cm

€ 600 – 800

258 A fine ivory netsuke of Hotei. 19th century

Dressed in a loose robe finely engraved with blossoms and scrolls, lying on his left side, the head resting on his left hand and holding the handle of a now missing fan (replaced by a small stone). Height 2.8 cm; width 7.2 cm

Provenance

Nagel, Stuttgart, 4.11.2010, lot 34

€ 1.600 – 2.000



259

- 259 **A small ivory netsuke of a recumbent shishi.**
18th century

Roaring, the head turned to the left and its legs drawn in for compactness.
Height 2.4 cm; length 3.4 cm

Provenance

Harriet Szechenyi (1922-2009), Zurich (sold at Bonhams, London 8.11.2011, lot 1). This piece was the first netsuke purchased by Harriet Szechenyi in about 1963.

Literatur

Illustrated in: Rosemary Bandini, *Shishi and Other Netsuke*, London 1999, p. 14, no. 10

€ 300 – 400



260

- 260 **A large Kyoto school ivory netsuke of a shishi with a ball.** Late 18th century

A shishi of triangular cross-section sits with a ball between its paws, the large head with an open mouth and a bushy mane. The eye pupils of brown horn.
Height 4 cm

Provenance

Lempertz, Cologne, 11./12.12.2009, lot 913

€ 1.500 – 1.800



261

- 261 **A Kyoto school ivory netsuke of a shishi. Kyoto.**
Early 19th century

Sitting on its tail, the eye pupils of black horn. Chip.
Height 2.6 cm; length 4.5 cm

€ 800 – 1.000



262



263

262 **A Kyoto school ivory netsuke of a seated shishi.**
Late 18th century

With a huge head, bushy mane and pointed long, tale, scratching its cheek with a hind paw. The eye pupils of brown horn.

Height 3 cm; length 4.7 cm

€ 1.200 – 1.400

263 **A large ivory netsuke of a shishi. Kyoto.**
Second half 18th century

Lying with legs wide apart, scratching its ear with the right hind paw, the mouth wide open with a loose ball inside.

The eye pupils of black horn.

Max. width 4.5 cm

€ 1.800 – 2.200



264

264 **A powerful boxwood netsuke of a shishi and a cub.** Late 18th century

The cub sitting on the back of its parent, who turns the head to the left, the mouth open with a loose ball inside, mane and tail rendered with locks and long strands of hair and distinctive sunburst tufts in engraving. Chips.

Height 3.3 cm; width 5.2 cm

€ 1.600 – 1.800



265

265 **An ivory netsuke of a shishi with a ball.** Late 18th/early 19th century

Of triangular shape, trying to mount a big ball clamped between his feet. A small loose ball in his open mouth. The eye pupils inlaid black.

Height 3.8 cm

€ 350 – 550

266 **A Kyoto school ivory netsuke of a one-horned dragon.** Late 18th/early 19th century

The scaly body coiled into an oval shape, with a long mane and with long and lambent tongues of flames emanating from the joints.

Height 2 cm; width 4.8 cm

€ 900 – 1.200



266

267 **An ivory netsuke of a dragon.** 19th century

Winding around a ken sword with a vajra-type pommel. Chipped.

According to the „Ko-ji Hô-ten“ this motif stands for ‚Amakurikara‘ (an abbreviation for Amaryô no Kurikara ryô, the rain dragon winding around a sword blade) which refers just like Yin and Yang to the two key principles of life.

Length 5,6 cm

Provenance

Nagel, Stuttgart, 4.11.2010, lot 599

€ 700 – 900



267



268

268 An unusual ivory manjû-like netsuke of a dragon on a rock. Early 19th century

Coiled on top of a rock, the eyes wide open and the mouth aggressively opened, the trunk of a blossoming plum tree following the curve of the scaly body.

Max. diameter 3.3 cm

€ 900 – 1.200



269

269 A marine ivory netsuke of Shôki at setsubun. Mid-19th century

Of triangular shape, Shôki, the demon queller, throwing beans at a group of oni at his feet.

The beans inlaid in brass. Inscribed Issai.

Chipped.

Height 4.3 cm; width 3.1 cm

Provenance

Zacke, Vienna, May 2012

€ 800 – 1.200

270 **An ivory netsuke of Hotei.** 18th century

The bare-chested god stands on his large bag, the ends placed over Hotei's shoulders and held in place with both his hands. The ivory of triangular cross-section.

Height 5.4 cm

€ 250 – 350



270

271 **An ivory manjū of Hotei with two karako.**
18th/19th century

Carved in openwork relief with Hotei seated with his arm resting on his bag and two playful karako, surrounded by bamboo and flowering branches, on the reverse two karako in a bamboo grove.

Width 4.8 cm

Provenance

Lempertz, Cologne, 7./8.6.2013, lot 948

€ 300 – 400



271



272

272 **A boxwood netsuke of a sennin or rakan.** 19th century

Standing with long hair curling into locks, holding a scroll, a billowing shawl placed over his arms, and wearing a skirt held in place by a beaded belt. Inscribed Minko.
Height 8.2 cm

Provenance
Lempertz, Cologne, 9./10.6.2011,
lot 283

€ 600 – 800



273

273 **A rare and amusing boxwood netsuke of Daikoku and Ebisu.** Late 18th/early 19th century

Daikoku, looking like a peasant but identifiable by his headdress and mallet, carries on his back a tiny figure of Ebisu with a bamboo branch with good luck charms including a notebook with the character reading chō (notebook) in allusion to the commonly written daifukuchō.

The subject refers to the Toka Ebisu matsuri (Tenth-day Ebisu festival) held every year in Osaka and the Kansai region from the 9th to the 11th of January. It is part of the New Year's celebration of visiting a shrine. Visitors buy branches of bamboo (fuku saza) and attach charms to it.
Height 8.5 cm

Provenance
Sotheby's, London, 10.11.2005,
lot 1260

€ 700 – 900



274

274 **A boxwood netsuke of a pot-bellied smiling Hotei.** Early 19th century

Standing with a shouldered bag, Hotei lifts his robe with the right hand in order to wade through a stream.

Hotei wading through water is a theme in Edo period zenga and Kano school painting.
Height 5.9 cm

€ 300 – 500

275 **A marine ivory netsuke of a smiling old sennin.**
19th century

Standing humped forward, with long hair, and both hands resting on a staff.

Height 6.1 cm

Provenance

Bonhams, New York, 25.3.2010

€ 700 – 900



275

276 **An ivory netsuke of Gama Sennin.**
Late 19th century

Standing, supporting a large toad on his shoulder.
Chipped.

Height 9.3 cm

Provenance

Christie's South Kensington, London, 19.7.2007,
lot 31

€ 700 – 900



276



277

277 An ivory netsuke of a laughing Fukurokuju.

Early 19th century

Standing and holding a gnarled staff, the long beard reaching down to his shoes, his robe incised with Hidemasa-type scrolls. Chip. Height 4.7 cm

€ 500 – 800



278

278 An ivory netsuke of a boat filled with takaramono.

First half 19th century

The slender boat is filled with tama, Daikoku's mallet, rice bales, a key, a money bag (kanebukuro), a hat and the mino. Chip. Height 1.6 cm; length 7.9 cm

€ 200 – 300



279

279 A partially stained ivory netsuke of Kadori Myōjin on a catfish.

First half 19th century

Wearing only a fundoshi, Kadori Myōjin lies on the "earthquake fish" trying to calm its movements by pressing down the namazu's head with his hands, the man's legs wide apart, the right foot resting on a gourd, laid to the side apparently useless against the fishes movements. The namazu's eyes of black horn. Length 6.1 cm

€ 400 – 500

280 **An amusing ivory netsuke of a laughing Fukurokuju, by Shōgyoku.** Second half 19th century

Seated with a Chinese-type fan while a karako stands on top of a ladder in order to shave the god's high pate. The child's tufts of hair of black horn. Signed Shōgyoku (Masatama).

Height 5.7 cm

€ 500 – 800



280

281 **An ivory netsuke of Raiden on a large drum, by Masatsugu.** First half 19th century

The God of Thunder crouches on a large taiko, a drumstick in his raised right hand. Horns inlaid, the nails of the drum skin of black horn. Signed Masatsugu in an oval reserve. Chipped, some inlays missing.

Height 4.3 cm

€ 250 – 350



281

282 **A small ivory netsuke of an elephant with a Chinese boy.** Early 19th century

A festively clad karako playing a flute sits on the back of a caparisoned elephant of rounded compact shape. Chip.

Height 3.6 cm; width 3 cm

Provenance

Barry Davies (1948–2005), London

Literatur

Galerie Gemini & Ichimonji Art, Exhibition of Fine Netsuke and Inrō, Munich 2004, no. 110

€ 350 – 450



282



283

283 A small boxwood netsuke of an elephant.
19th century

A karako playing a flute seated on the back of an elephant with legs wide apart, and a very long trunk. Chip.

Height 2.6 cm; width 3 cm

€ 300 – 400



284

284 A fine ivory netsuke of a suisei. 19th century

Seated on an oval base, the head with a single horn turned, a tortoise's carapace on the back, the fur finely engraved and its eyes of brown horn.

Height 2.4 cm width 3 cm

Provenance

Collection Marcel Lorber (1900–1986),
(by repute)

Collection Karl M. Schwarz (1926–2007),
Vienna (sold at Klefisch, Cologne, 26.1.2008,
lot 101)

Literatur

Illustrated in: Karl M. Schwarz, *Netsuke Subjects*, Vienna 1992, p. 55, no. 107

€ 900 – 1.200

285 Four ivory shishi netsuke. 18th/19th century

a) Seated on a rectangular base, b) placing the right forepaw over its cub, c) standing on a rectangular base carved in openwork, the head turned to the side, signed Shōunsai with kaō, and d) standing on an oval base, the head turned, roaring. (4)

Height a) 4.4 cm; b) 2.7 cm; c) 3,2 cm; d) 2.8 cm

Provenance

c) Christie's South Kensington, London,
19.7.2007, lot 21

€ 400 – 600

[image online](#)

- 286 **An ivory netsuke of a shishi no tamago.**
Early 19th century

The shishi is about to step out from an eggshell, the mouth wide open with a loose ball inside, of triangular cross-section. The eye pupils of black horn. Height 2.9 cm; length 3.8 cm

€ 1.000 – 1.200



286

- 287 **A boxwood netsuke of a shishi no tamago.**
First half 19th century

The shishi looks out from a spherical eggshell, the mouth closed with only the upper row of teeth visible. The eye pupils of black horn, the dots on the eggshell in ukibori. Inscribed Raku. Chip. Height 3.9 cm

€ 800 – 1.200



287

- 288 **An ivory netsuke of a shishi and a cub.**
Mid-19th century

Of triangular shape, the mother sitting on its tail, with a flowering peony branch in its mouth and placing its paw over the young's back. Restored. Height 1.9 cm; width 4.4 cm

€ 700 – 900



288

289 A Nagoya school cherry wood netsuke of a sleeping shôjô, by Mitsutame.
Mid-19th century

Asleep with head resting on the right hand, the knees drawn up to its body, the robe with finely incised hanabishi, the hakama with cloud patterns in relief, the long hair falling over its back. Signed Mitsutame in ukibori in a rectangular reserve.

Height 3 cm; length 4.5 cm

Provenance

Francois Storno, Genève (sold at Christie's, London, 16.5.2007, lot 309)

Literatur

The signature illustrated in: George Lazarnick, Netsuke and Inrô Artists and How to Read Their Signatures, Honolulu 1982, p. 788

€ 1.000 – 1.500



290 A fine Nagoya school cherry wood netsuke of a sleeping shôjô, by Tadashige.
First half 19th century

Asleep with head resting on its right hand, the knees drawn up to its body, the robe with finely incised hanabishi, the hakama with wave patterns in relief, the long hair falling over its back. Signed Tadashige in ukibori in a rectangular reserve.

Height 3.1 cm; length 4.7 cm

€ 1.600 – 1.800





291

- 291 A fine Nagoya school boxwood netsuke of a sleeping shōjō, by Masamaru.
Mid-19th century

Seated with head propped on its hand, the left hand placed on the leg, dressed in brocade robes with hanabishi and shokkō patterns, the long hair falling over its back. Signed Masamaru in a rectangular reserve.
Height 3.5 cm

€ 1.400 – 1.600



292

- 292 A Nagoya school cherry wood netsuke of a sleeping shōjō. 19th century

Seated, the large round head propped on its right hand, the long hair falling over the back, the trousers with a wickerwork pattern. Inscribed Ikkō in an oval reserve.
Height 3.8 cm

Provenance
Benoit Rebus, Paris

€ 300 – 400



293

293 **A wood netsuke of Kiyohime.**
19th/20th century

Kiyohime has changed into a furious Hannya with a striker in her three-clawed hand, her snake body coiled around the bell of Dōjōji temple. Inscribed Tametaka tō. Height 5.1 cm

Provenance
Zacke, Vienna, 15.10.2007, lot 165

€ 500 – 700



294

294 **A boxwood netsuke of a shishi.**
Early 19th century

Seated on his bushy mane, the left hind leg raised to scratch his left ear. The eye pupils of horn. Inscribed Minko. Height 3 cm; width 4.3 cm

€ 1.500 – 1.700



295

295 **A good boxwood netsuke of a dragon, by Shigekazu.**
Mid-19th century

Coiled amidst clouds, the very large head taking up the whole top side of this ryūsa manjū type netsuke. The eye of yellowish horn. Signed Shigekazu in a reserve. Diameter 4.4 cm

€ 1.200 – 1.600



296

296 **A stained ivory netsuke of a rakan with a shishi, by Kikuchika.**
Second half 19th century

With a large leaf held in the manner of a fan, seated on a shishi, which is holding on to a ribboned ball, while a boy sitting in front of them tries to pull the ribbon out of the shishi's mouth. Signed Kikuchika.
Height 3.7 cm

€ 500 – 700



297

297 **An unusual ivory netsuke of Fūten.**
Late 18th century

Kneeling, with hair raised and a wide grin on his face, shouldering the windbag. The eye pupils formerly inlaid. Restored.
Height 4.7 cm; width 3.5 cm

Provenance

Lempertz, Cologne, 11./12. 12. 2009, lot 815

€ 400 – 600

298 **An ivory netsuke of Raiden/Fûten.** Mid-19th century

Running on billowing clouds and shouldering a bag from which emerges a swirl of air and with a drum attached to the ends of the bag. The nails of the drum of black horn, two nails missing.

Height 3.8 cm

€ 600 – 800



298

299 **A boxwood netsuke of Oni Soshiki.**

Second half 19th century

Running off with the stolen Buddhist reliquary (sharitō), which the guardian god Idate was supposed to protect.

Height 4.2 cm

€ 400 – 500



299

300 **A wood netsuke of an Enma-ō with two oni.**

Early 19th century

The King of Hell lies on his right side holding a sceptre, head resting on his propped-up arm, while two frolicking oni sit around him. The eye pupils of horn.

Inscribed Minko.

Height 2.5 cm; length 5.3 cm

Provenance

Christie's South Kensington, London, 9.11.2011, lot 154

€ 600 – 700



300



301

- 301 **A dark wood netsuke of an oni in a portable heater.** Mid-19th century

The muscular demon, fleeing from the ritual bean throwing (oni harai) at the spring equinox (setsubun), hides in an anka, his arm reaching out from one hole, his face visible in the other hole of the box. Chipped. Beans missing.

Height 2,3 cm; length 3,3 cm

€ 400 – 500



302

- 302 **A boxwood netsuke of an oni trapping Shôki.** 19th century

Shôki, the demon queller, trapped under a basket by an oni, his sword piercing the basket. Inscribed Tomokazu in an.

Height 2.9 cm; length 3.9 cm

€ 250 – 450



303

- 303 **A boxwood netsuke of Shôki and oni.** Early 19th century

Shôki, the demon queller, has subdued a one-horned oni and points his sword at him. Restored.

Height 5 cm

€ 300 – 500

- 304 **An ivory netsuke of Ebisu, by Hidemasa.**
Early 19th century

Climbing over a huge blowfish (fugu), wearing an eboshi, trousers (kukuri hakama) and a garment whose long sleeves are bound together with a tasuki band tied into a large bow at the back, the fugu's tail fin turned to the right. Pupils of the fish of black horn. Signed Hidemasa.
Height 2.9 cm

Provenance

Bluth Collection (paper label)

€ 700 – 900



304

- 305 **A small ivory netsuke of Ebisu with a blowfish.**
Early 19th century

Wearing Shintô ceremonial robes with an eboshi, Ebisu is standing on one leg and balancing a huge fugu on his head, supporting it with his hands. The eye pupils of the fish of black horn.
Height 4.2 cm

€ 300 – 500



305

- 306 **An ivory netsuke of Hotei and three karako.**
Mid-19th century

Holding a Chinese-type fan, Hotei sits laughing and leaning onto his bag, surrounded by three festively clad karako making music, one playing a biwa, one beating a drum and one playing a flute. Inscribed Kagetoshi in a raised rectangular reserve.
Height 3.8 cm; width 4.1 cm

€ 600 – 800



306



307



308



309



310

307 **A small wood okimono of Jurōjin, by Shōko.**
Late 19th century

Seated on a rock, holding a large stiff fan, feeding a crane standing at his side. Signed Shōko.
Height 5.3 cm

€ 400 – 600

309 **A fine ivory netsuke of Benten.** Mid-19th century

Head raised, dressed in finely engraved long flowing robes, a shawl placed around her body and a Chinese-style stiff fan in her right hand.
Height 5 cm

Provenance

Klefisch, Cologne, 21.4.2012, lot 480

Literatur

Illustrated in: Karl M. Schwarz, *Netsuke Subjects*, Vienna 1986, p. 29, no. 10

€ 700 – 900

308 **A small Osaka school stained ivory netsuke of Jurōjin, by Masayuki.** Mid-19th century

Standing next to a stag and holding on to its muzzle, Jurōjin strokes his long beard, on an irregular base. The eyes of the deer of black horn. Signed Masayuki in an irregular reserve.
Height 2.9 cm

Provenance

Lempertz, Cologne, 7.12.2007, lot 342

€ 400 – 500

310 **An ivory netsuke of Taishin Ō.** 19th century

The Chinese female immortal sits on a coiled dragon and plays the zither. The eye pupils of the sennin and the dragon of black glass. Chipped.

€ 400 – 500



311



312



313

311 A large boxwood netsuke of a shishi with a peony, by Tomotoshi. 19th century

Striding forward on a rocky ground, the head turned to the left, a huge peony flower in its mouth. Signed Tomotoshi in a slightly raised oval reserve. Chipped.

Height 3.7 cm; width 4.9 cm

€ 1.200 – 1.600

312 A fine small boxwood netsuke of a sitting shishi. Mid-19th century

The head turned to the left, protectively placing one paw over a ball, a long ribbon in his mouth.

Height 2.5 cm; length 3.4 cm

€ 300 – 500

313 A boxwood netsuke of a shishi with a ball. 19th century

Bending over and biting into a ball carved in openwork with a loose ball inside, the eye pupils of black horn. Inscribed Masamitsu on a slightly raised rectangular tablet.

Height 3.2 cm; length 4 cm

€ 400 – 500



314

314 **A boxwood netsuke of a shishi with a ball.**
Early 19th century

Seated on an irregular base, the head turned back, the left forepaw placed on a ball with a large opening. The eye pupils inlaid. Chips. Height 3.8 cm

€ 1.000 – 1.300

315 **A wood netsuke of a mukuge-inu.**
19th century

Seated on his long tail a ball between his paws, snarling, the head turned. Inscribed Tametaka on a slightly raised oval-shaped reserve.

The present piece could also be a study of a musk cat (jakoneko). These animals became popular for their musks used for perfume.

Our piece matches Frederick Meinertzhagen's opinion on a netsuke in his collection (see MCI, p. 854, wood netsuke of a 'Chin' with bushy tail). He states that being a careful copy it does lack the artistic quality of Tametaka's original works. Both Meinertzhagen's and the present piece feature a similar oval-shaped reserve forming a point at the bottom). Height 4.3 cm

Provenance

Nagel, Stuttgart, 7. 5. 2011, lot 1932

€ 1.200 – 1.600



315



316

316 A wood netsuke of the Three Wise Monkeys

Seated back to back in a circle and covering their eyes, mouths and ears with their paws. The eyes of light horn. Inscribed Mitsukazu in an oval reserved from the engraved fur.

The subject of the sanpiki saru, the monkeys embodying the principle of „see no evil, hear no evil, speak no evil“ originated in the decoration of the horse stables of Nikkō. Height 3,5 cm

€ 400 – 500

318 A boxwood netsuke of a tanuki. First half 19th century

Wearing a kimono the tanuki reads a book placed on his huge scrotum, the head resting on his propped up arm. Remains of black and red lacquer. Chips. Height 3,4 cm

€ 300 – 400



318



317

317 A boxwood netsuke of a bunbuku chagama. 19th century

A priest placing his hand on his head in an expression of surprise sits in front of a water kettle (chagama), which is changing into a tanuki. Height 3,5 cm

Provenance

Edward and Marilyn Flower, New York (sold at Christie's South Kensington, London, 12.5.2010, lot 163)

€ 200 – 300

319 A boxwood netsuke of a tanuki hara tsutsumi. 19th century

Drumming his protruding belly/scrotum, his back partly covered by a tattered lotus leaf. One eye pupil of black glass, the other missing. Height 2,9 cm

€ 200 – 250



319



320

320 An Edo school wood netsuke of a kappa on a hamaguri, by Kômin. 19th century

Climbing over a ridged clam which is closing its valves on the kappa's foot, on his back a tortoise's carapace, the pimply skin of the legs rendered in ukibori. The eye pupils painted black under translucent horn, the depression on top of his head inlaid with a grey material, the umbo inlaid with shell, the cord holes lined with silver. Signed Kômin on a rectangular gilt tablet. Restored.

Height 3.1 cm; width 3.1 cm

€ 800 – 1.200



321

321 A large Edo school boxwood netsuke of a tengu no tamago, by Shûmin. Mid-19th century

A karasu tengu hatches from its cracked egg, the underside carved with a maple leaf, an oak leaf, and pine needles in fine line engraving, one cord hole in shape of a ginkgo leaf. The tengu's cap of kaki wood. Signed Shûmin. Restored.

Height 3.6 cm; length 4.1 cm

€ 1.200 – 1.500

- 322 **A wood and lacquer netsuke of a kappa breaking out from an egg.** Second half 19th century

The water sprite looks out from an upright egg, the shell covered by silvery lacquer, the hair, the eye pupils and the lining of the cord holes lacquered shiny black.

Height 3.9 cm

€ 200 – 400



322

- 323 **A fine large boxwood netsuke of a tengu no tamago.** 19th century or later

The grim-looking karasu tengu emerges from a cracked egg, one claw pulling out his right wing while the other claw rests on the shell. The eyes of light and black horn. Restored.

Height 4.1 cm; length 4.4 cm

€ 800 – 1.000



323

- 324 **A boxwood netsuke of a long-nosed tengu.** 19th century

Dressed as a yamabushi with cap and yuigesa, the back covered by crow's wings, and sitting in front of a mortar (suribachi) using his long nose as a pestle (surikogi). Age crack.

Grinding in a mortar is a sexual allusion.

Height 3.7 cm

€ 400 – 600



324



325

325 A wood netsuke of a laughing Hotei, by Shûzan. Mid-19th century

The bare-chested god sits with a tama in his hand, the other hand resting on the bag placed next to him. The cord holes lined with gray horn. Signed Shûzan.
Height 3.9 cm

€ 600 – 800



326

326 An Edo school boxwood okimono-type netsuke of Hotei and a karako, by Gyokkô. Mid-19th century

Hotei sits pot-bellied with a karako in front of him who strikes the belly with a flywhisk as if it were a mokugyo. The hairs of the flywhisk of bone. Signed Gyokkô.
Height 3 cm; width 4.8 cm

€ 300 – 500



327

327 An Edo school wood netsuke of Hotei and a karako. Second half 19th century

Hotei stands laughing and holding up the puppet of a manzai dancer with a wand of bells (suzu), while in front of him a karako jumps up joyfully. Inscribed Hōjitsu. Height 4.4 cm

€ 400 – 600



328

328 A fine boxwood netsuke of Hotei and karako. Mid-19th century

Holding a stag antler tama in his left hand and laughing out loud while sitting in his treasure bag being dragged by a karako. Inscribed Gyokkei. Height 2.9 cm; length 4 cm

€ 800 – 1.200



329

329 A boxwood netsuke of Hotei and a karako, by Tomomasa. 19th century

Hotei with a Chinese-style fan sits on his bag, which is playfully pulled with great exertion by two tiny karakos. Signed Tomomasa with kaō. Losses. Height 2.2 cm; length 5 cm

Provenance

Walter Samuel, 2nd Viscount Bearsted (1882-1948), Warwickshire, Great Britain (sold at Christie's, London, 15.12.1987, lot 4)

€ 200 – 400



330

- 330 **A boxwood netsuke of Fukurokuju, by Hide.**
19th century

Standing, with both hands holding a gnarled staff with a scroll tied to it, a long cloth covers his mighty cranium and back. Signed Hide.
Height 4.9 cm

€ 600 – 800



331

- 331 **An Edo school boxwood netsuke of Fukurokuju, by Hōmin.** Mid-19th century

Standing with hands tucked into the sleeves, the slightly lowered head partly shaven, the hair arranged into a knot at the back of the head and covered by a tied cloth. Signed Hōmin.

Height 4.5 cm

€ 500 – 600



332

332 **A wood netsuke of Fukurokuju, by Ryūgyoku.** Mid-19th century

His legless body and head covered by a robe with an incised asa-no-ha pattern, which gives him the appearance of a Daruma roly-poly-doll. Signed Ryūgyoku and seal inlaid in bone.

Height 4.3 cm

€ 300 – 400



333

333 **An ebony netsuke of a laughing Jurōjin.** 19th century

Holding up a scroll for display, the gods sits on a stag with closely placed together hooves and a finely incised fur with dots reserved from the engraving.

Height 5.7 cm

€ 400 – 600



334

334 **A wood netsuke of Daikoku.** 19th century

Standing with his mallet, the other hand raised, his jacket engraved with scrolls.

Height 4.1 cm

Provenance

Walter Samuel, 2nd Viscount

Bearsted (1882-1948), Warwickshire, Great Britain

Christie's, London, 15.12.1987, lot 101 (unsold)

€ 500 – 700



335

335 A wood netsuke of a karako with a bag, by Gyokusai. Mid-19th century

Squatting and clutching a huge bag with both hands, wearing a long robe with a large collar. Signed Gyokusai.

Height 2.9 cm; width 3.8 cm

Provenance

Nagel, Stuttgart, 30./31.5.2003, lot 1894

€ 900 – 1.200



336

336 A boxwood netsuke of a karako with Hotei's bag, by Bokusai. Mid-19th century

Wearing a ruffled collar the boy crouches in front of Hotei's bag which he tries to lift. Signed Bokusai.

Height 3.2 cm

€ 900 – 1.200

337 A boxwood netsuke of a karako with Daikoku's hammer, by Masanao. Second half 19th century

Wearing an ornate collar, the boy kneels in front of Daikoku's hammer which he tries to lift. Signed Masanao in a rectangular reserve.

Height 2.9 cm

€ 250 – 350



337

338 A fine ivory netsuke of a karako with a crane. First half 19th century

Seated, smiling happily and holding a small crane in his hands. Fine golden patina.

Height 3.7 cm; width 3 cm

€ 600 – 800



338



339

339 **A stained ivory netsuke of Chinnan Sennin.**
Second half 19th century

Seated and encircled by a one-horned dragon,
which emerges from a small alms bowl in the
sennin's hand. Restored.

Height 3.2 cm

€ 400 – 600

340 **An ivory netsuke of a Chinnan Sennin.**
Early 19th century

Seated and laughing, holding an alms bowl in
his right hand from which a dragon emerges.

Small chip. Age cracks.

Height 3.4 cm

€ 400 – 600



340

341 An ivory netsuke of Chôryô and Kôsekikô, by Nagahisa. Mid-19th century

Kôsekikô with a scroll in his hand rides over a bridge while Chôryô presents the sage with the shoe he has rescued from the dangerous dragon-infested waters. Signed Nagahisa. Height 4.1 cm

€ 400 – 600



341



342

342 A fine ivory okimono netsuke of Chôryô and Kôsekikô, by Hôshinsai. Second half 19th century

Chôryô, rising from the water on the back of a dragon and looking up to Kôsekikô who is crossing the river on the back of his horse, holding a scroll in his right hand. Inscribed Hôshinsai and seal Hôzan. Chipped.

According to the legend, Kôsekikô rewards Chôryô for having rescued his shoe by handing him over his scroll. This scroll, the famous Tora no maki, made Chôryô a wise man both in military and political matters. Height 4.8 cm; width 4.0 cm

Provenance

Nagel, Stuttgart, 16.5.2008, lot 1674

€ 700 – 900



343

343 **A vegetable ivory netsuke of a shishi.** 19th century

The animal is rolled into a large ball, with a mane rendered with tight curls, and long strands of hair to both sides of the backbone, which ends in a small tail. Cracks.

Height 4.9 cm

€ 300 – 400



344

344 **A Hirado porcelain netsuke of a shishi.**
19th century

Seated, its head raised with a loose ball in his mouth.
Height 3.1 cm; length 4 cm

Provenance

Harriet Szechenyi (1922–2009), Zurich (sold at Bonhams, London, 8.11.2011, lot 35)

€ 300 – 400



345

345 **A very large synthetic material netsuke of a very large shishi.** Late 19th century

With head turned backwards and a loose ball in the wide-open mouth.

Height 4.3 cm; length 6.7 cm

€ 200 – 300



346

346 **An Iwami-style boar's tusk netsuke.**
19th century

Carved in relief with a running dragon.
The eye pupils of black horn.
According to the consignor a bear's tooth
and attributable to Kanman.
Width 9.4 cm

€ 700 – 900

347 **A bamboo root netsuke of a tanuki, by
Kazan.** Late 19th century

Sitting on top of a piece of bamboo, looking
straight ahead and wearing a robe and hakama.
Signed shō (first generation) Kazan saku and
sealed Kazan.
Height 5.4 cm

Provenance
Raymond Bushell (1910–1998), Tokyo, by repute

€ 200 – 300



347



348

348 **A copper alloy netsuke of a Fushimi ningyo.** 19th century

Standing pot-bellied with a Chinese-style stiff fan, holding the cord of his bag placed beside him. Cast in two parts. Gilding to the fan and bag. Hotei clay figurines (tsuchi ningyo) were regional souvenirs of the Fushimi Inari Shrine in Kyoto. Height 5 cm

Provenance

Gé van der Heijden, The Netherlands (sold at Klefisch, Cologne, 27.9.2008, lot 91)

€ 200 – 400



349

349 **A bronze netsuke of Daikoku.** 19th century

Standing upright, each foot on a rice bale, holding his mallet and shouldering his bag. Height 3.8 cm

€ 200 – 400

350 **Three metal netsuke.** 19th century

a) A Kyubei-style sentoku globular pot with a hinged openwork lid, an amaryū and a gourd in relief to the outside, b) a bronze head of a karasu tengu, bronze, and c) an iron mask of an oni. (3) Height a) 3.4 cm; b) 4.4 cm; and c) 3.8 cm

€ 200 – 400

image online



351

351 **A large peg-manjū of a rakan, by Moritoshi.** Second half 19th century

Carved in sunken relief with the large figure of Handaka Sonja, his head surrounded by a halo, eye to eye with a large winding dragon. Signed Moritoshi and his crane seal. Diameter 5.3 cm

Provenance

Dr. Karl M. Schwarz (1926–2007), Vienna, (sold at Klefisch, Cologne, 26.1.2008, lot 3)

Literatur

Karl M. Schwarz, Netsuke Subjects Addendum, Graz 2001, no. A 15

€ 400 – 500

- 352 **A stained manjū of a dragon-type creature.**
Second half 19th century

Displaying a mythical creature, possibly a makatsugyo on a ground of stylized waves within a flower shaped border. The reverse engraved with stylised chrysanthemum leaves. Width 4 cm; height 3 cm

€ 600 – 800



352

- 353 **A large walrus tusk ryūsa-manjū of a dragon.**
Second half 19th century

The front carved with a coiled dragon en face on a ground of stylized waves, within a lozenge with a meander border, the reverse carved with swirling clouds. Diameter 4.7 cm

€ 400 – 500



353

- 354 **A stained ivory ryūsa manjū of an amaryū and three mon.** Second half 19th century

Of flat round shape carved in openwork with a slender rain dragon amidst clouds and three mon (hōjo uroko, maru chigai kama, and shell), a large flower to the reverse.

Diameter 4.1 cm

€ 250 – 350



354

- 355 **An unusual kagamibuta of a turnip with a rat, by Mitsuhiro.** 19th century

The disc of shibuichi with a large turnip and a rat hiding behind it in kebori and katakiri, signed Mitsuhiro. The bowl of stag antler with tama in openwork and kiku in relief. Seal character reading koku. Cracks.

Length 3.3 cm

€ 800 – 1.000



355



356

356 An ivory netsuke of a skeleton with a mokugyo, by Yūgyoku. Late 19th century

The skeleton sits on a zabuton, the striker in his hand placed on top of the mokugyo between his legs. Inscribed Yūgyoku tō.
Height 2.6 cm

€ 400 – 600



357

357 An unusual stag antler netsuke of a dragon on a bowl. Second half 19th century

Standing with tail raised on an upturned alms bowl, the long scaly body with flames emanating from the joints and with long whiskers.
Height 3.4; width 3.5 cm

€ 1.000 – 1.500

358 An amusing ivory netsuke of Fukusuke. Second half 19th century

Standing and bowing with a large moveable head, the good luck dwarf wears a kamishimo adorned with family crests and holds a close folding fan. Inscribed Anraku.
Height 3.9 cm

Provenance

Nagel, Stuttgart, 11.11.2008, lot 1909

€ 500 – 600



358

- 359 **A small Tokyo school ivory okimono of five karako and an elephant, by Hôshinsai.**
Second half 19th century

On top of a caparisoned elephant two karako beat a drum while three other karako stand next to the animal on a flat base, playing a flute, carrying a flag and beating a drum. Signed Hôshinsai and seal Hôzan. Restored. Chipped.
Height 5 cm

€ 400 – 500



359

- 360 **A small stained ivory okimono of Monju Bosatsu, by Shiryô (Yukiyoshi).** Late 19th century

Seated on the back of a roaring shishi standing on a flat cloud base, the bosatsu reads in an open scroll, the long shawl swirling around the figure and animal. Signed Shiryô (Yukiyoshi).
Height 5.8 cm

Provenance
Christie's, Paris, 10.6.2009, lot 90

€ 350 – 450



360

- 361 **A fine ivory netsuke of a Kinko Sennin.**
Second half 19th century

Seated with a scroll in his left hand astride a big carp on stylised waves. The carp's large eyes of mother-of-pearl and brown horn.
Height 3.4 cm; length 5.8 cm

€ 500 – 700



361



362

362 An unusual ivory netsuke of Hotei and two wrestling karako, by Toshikata (Nenpō). Late 19th century

Hotei stands and holds a Chinese-type fan while he is amused by the two karakos wrestling on top of his potbelly, the fan functioning as the prop of the sumo bout's referee. Signed Toshikata (Nenpō) in an oval reserve. Height 7.7 cm

Provenance
Sotheby's Olympia, London,
15.11.2001, lot 129

€ 300 – 400



363

363 An unusual ivory netsuke of a standing Hotei, signed Sōmei. Around 1900

Holding a sake cup and with a double gourd containing sake tied around his back, the robe finely engraved with a pattern of tiny spirals. Signed Sōmei. Height 4.4 cm

€ 300 – 400



364

364 An ivory netsuke of a street singer, by Yasuaki (Hōmei). Around 1900

Standing with a pair of small wood mokugyo and a stick, his robe stained green and decorated with four-petaled flowers (hanabishi) inlaid in red lacquer and silver. Signed Yasuaki (Hōmei) and red lacquer seal reading Kodama. One sandal restored. Height 4 cm

Provenance
Lempertz, Cologne, 12.6.2006,
lot 1111

€ 700 – 800

365 An ivory netsuke of a minogame, by Komin. 19th century or later

With an elongated carapace, a long pointed tail and a raised dragon-like head. The eye pupils of light and dark brown horn. Signed Komin. Height 1.7 cm; length 6.6 cm

€ 200 – 400

[image online](#)

366 A very fine Tokyo school wood netsuke of Hotei at setsubun, by Tōkoku. Late 19th century

Standing with one foot slightly raised, he holds a rice measure box (masu) with roasted beans and lifts his right hand in order to throw beans, tied to his head, but worn like a hat, the mask of an Okame. The cord holes lined with green-stained bone. Signed Tōkoku and a silver-inlaid seal reading Bairyū. Chip to the right big toe smoothed.

Height 4.9 cm

Provenance

Carl A. Kroch (1915–1999), Chicago, USA (sold at Christie's, New York, 1.12.1987, lot 76)
Barry Davies Oriental Art, London, 2001

€ 2.500 – 3.000



Collection Josef Kanehls, Düsseldorf
Lot 367 – 374

367 **A rare boxwood netsuke of a kirin.**
Late 18th century

Seated on its haunches, howling and raising its head with a single horn, flames emanating from the joints and the bushy mane well carved. The eyes and other details accentuated with black ink.

Hairline cracks.

This is the classical model of a Tomotada kirin, even if the himotōshi drilled straight through the belly is somewhat unusual.

Height 9.3 cm

Literature

Compare a similar model of a kirin with bent knees in: Neil Davey, *The Hindson Collection*,

London 1982, p. 387, no. 1160

€ 4.000 – 5.000



- 368 A fine ivory netsuke of Hotei, by Tomochika.
19th century

Laughing, dressed in a loose robe revealing his large potbelly and holding a tama in his right hand. The karako to his left wearing a sleeveless vest and a Manchu hat. Signed Tomochika.
Height 3.9 cm

€ 400 – 600



368

- 369 A tall ivory netsuke of a Chôkarô Sennin.
18th century

Standing, head raised, wearing a leaf coat and loose robes revealing his bare skinny chest and his round belly, holding the rope of the double gourd in his left hand. One foot missing.
Height 10.4 cm

€ 900 – 1.200



369

370 **A rare boxwood netsuke of two horses.**
Late 18th century

Standing back to back, their feet close together and their lowered heads turned away from each other. The delicately engraved fur lines follow the arched backs and the curved bodies.

Dents.

Height 3.7 cm

€ 2.500 – 3.000



371 **A boxwood netsuke of Yamauba and Kintarô.**

Late 18th century

Standing on one foot, dressed in a loose robe revealing her bare bosom and a leafy skirt, the „Old Woman of the Mountains“ carries Kintarô on her shoulder. The naked „Golden Boy“ holding a rope with a mushroom attached to each end. Restored.

Height 7.8 cm

€ 1.200 – 1.600



371



372

372 A boxwood netsuke of a shishimai mask.

Late 18th century

With fierce looking bulging eyes and a flat nose, covered all over with tufts and locks of hair, the lower jaw opens to reveal a tongue and an upper and lower row of teeth. Illegibly inscribed. Chipped.

Height 2.8 cm

€ 400 – 600



373

373 A bone netsuke of a group of four skulls.

Late 19th century

On top of two large skulls and one smaller one sits a fourth skull, all of them realistically rendered with large eye sockets, the jaws with an upper row of teeth and suture lines. Signed Seisai?

In Japanese art the numeral four respectively the representation of four objects is avoided since the word for „four“ (= shi) also means death. In this case the representation of four skulls is congruent with the meaning of shi.

Height 2.9 cm; width 4.1 cm

€ 900 – 1.200

374 **An interesting and rare polychromed cypress wood netsuke of figure group.** 18th century

The bald tall male figure with hands crossed at the chest is reminiscent of a ghost such as Mikoshi Nyūdō, towering above a woman wearing an obi tied at the front therefore representing a courtesan, her hairdo in keeping with representation of 18th-century oiran. Abrasion of colours and visible white gofun ground due to age.

Height 10.5 cm

€ 1.200 – 1.600



374

The Papp Collection of Netsuke III

Lot 375 – 415



375 **An ivory netsuke of Hotei.** 18th century

Seated at ease and leaning on his bag.
Height 3.2 cm; width 4.4 cm

Provenance
Probably purchased from Pronner,
August 1972
Coll. no. 910 (printed)

€ 500 – 700

375



376

376 A stag antler netsuke of Fukurokuju. 19th century

Carved from the thin tip of an antler, standing and holding a Chinese-style fan (uchiwa).
Height 7.6 cm

Provenance
Purchased from the estate of Dr. Franz Weber, Vienna, May 1967, Coll. no. 857 (handwritten)

€ 200 – 350



377

377 A black lacquer netsuke of Daikoku. 19th century

Bending forward under the weight of his heavy bag.
Height 1.9 cm; width 4.4 cm

Provenance
Probably a gift from Grete Damm, Munich 1993
Coll. no. 439 (handwritten)

€ 200 – 300



378

378 An ivory netsuke of Shōki on a shishi, by Tomochika. 19th century

The fierce looking demon queller seated on the back of a powerful shishi swings his sword with both hands. Signed Tomochika.
Height 3.9 cm; width 3 cm

Provenance
Purchased from J. van Daalen, Utrecht, March 1966
Coll. no. 798 (printed and handwritten)

€ 400 – 600

379 A boxwood netsuke of ashinaga and tenaga. 19th century

The long-armed tenaga with a cowry in his right hand is carried by the ashinaga on his back. Cracks. Restored.
Height 12.7 cm

Provenance
A gift from Grete Damm, Munich, 1.6.1983 Coll. no. 515 (printed and handwritten)

€ 200 – 300

[image online](#)



380

380 **An ivory and a stag antler netsuke of Hakusôzu.** 19th century

a) In dancing posture, both forepaws raised, and b) standing upright, dressed in priest robes and wearing a hood. (2)

Height a) 4.7 cm; b) 6.4 cm

Provenance

a) Purchased at Hauswedell, Hamburg, 4.6.1962, lot 496; coll. no. 607 (printed); b) purchased in Munich, September 1978; coll. no. 652 (handwritten)

€ 650 – 850



381

381 **A boxwood netsuke of a professional sneezer, by Gyokkei.** Mid-19th century

Seated cross-legged, tickling himself with a thin stick inlaid in bone in order to elicit a sneeze, the mouth open. One cord hole lined with ivory.

Signed Gyokkei.

Height 3.6 cm; width 4.0 cm

Provenance

A birthday gift from Grete Damm, Munich, July 1989
Coll. no. 503 (handwritten)

€ 700 – 900



382

382 **A boxwood netsuke of Kanshin.** Early 19th century

Crawling between his braggart's legs the dispossessed prince and later general avoids trouble rather than create disturbance. Restored.

Height 5.0 cm

Provenance

Purchased from Ohmura, Hamburg
Coll. no. 772 (printed and handwritten)

€ 300 – 500

383 **Three boxwood netsuke.** 19th century

a) A peasant carrying two captured oni in his big bag, b) a blind man with a staff, the eye pupil of black horn, and c) a karako playing with a monkey, signed Issai. (3)

Height a) 3.9 cm; b) 4.6 cm; c) 3.1 cm

Provenance

a) Through Grete Damm, Munich, October 1982; coll. no. 528 (handwritten); b) through Grete Damm, Munich, May 1982; coll. no. 535 (handwritten); c) coll. no. 725 (printed and handwritten)

€ 400 – 500



383

384 **Three ivory netsuke.** 19th century

a) A sleeping sarumawashi and a monkey reaching for the trainer's basket, chipped, b) an upright standing monkey with a funny mask and bells, signed Gyokusai, and c) a monkey leaning against a peach. Restored (3)
Height a) 2.1 cm; b) 4.6 cm; c) 2.4 cm

Provenance

a) Purchased from Helmut Laudenbach, Berg, 22.2.1985; coll. no. 497 (handwritten); b) purchased from Ohmura, Hamburg, December 1966; coll. no. 839 (handwritten); c) purchased from Alexander Pollmer, Munich; coll. no. 963 (printed and handwritten)

€ 400 – 700



384

385 **Three boxwood netsuke.** 19th century

a) A luckless rat catcher, the eye inlaid in bone, signed Bunshūsai on a green-stained stag antler tablet, b) a man polishing the character 'kokoro' (heart), and c) a cook preparing an eel, inscribed. (3)

Height a) 4.2 cm; b) 3.1 cm; c) 3.4 cm

Provenance

a) Purchased from Alexander Pollmer, Munich, September 1972; coll. no. 909 (printed and handwritten); b) purchased from Ohmura, Hamburg, February 1966; coll. no. 797 (handwritten); c) probably purchased from Alexander Pollmer, Munich, 1975, coll. no. 974 (printed and handwritten)

€ 400 – 600



385



386

- 386 **A stag antler seal-type netsuke of a mythical beast.**
Early 19th century

Seated on an oval base. The single horn, the scaly body and the thin forelegs are those of a kirin. A porous area to the head plugged.

Height 5.3 cm

Provenance

Coll. no. 744 (handwritten) (no index card)

€ 300 – 400



387

- 387 **An ivory netsuke of an elephant.** 17th/18th century

Kneeling on a rectangular base, the head slightly turned to one side. The proper right ear missing. Age cracks, chip.

Height 3.6 cm; width 3.6 cm

Provenance

Purchased from Helmut Laudenbach, Berg, February 1979

Coll. no. 769 (handwritten)

€ 200 – 400

- 388 **A wood netsuke of a shishi with young.**
Late 18th/early 19th century

The parent recumbent, snarling and displaying two loose balls in its mouth, the cub seated on the mother's back facing in the opposite direction. Chipped, dents.

Height 3.4 cm; width 5 cm

Provenance

Purchased from J. van Daalen, Utrecht, December 1970

Coll. no. 869 (printed)

€ 800 – 1.000

- 389 **An umimatsu netsuke of a shishi.** Early 19th century

Sitting on a rocky base, head turned to the side, the left forepaw raised. Age cracks typical to umimatsu.

Height 3.5 cm; width 3.8 cm

Provenance

Purchased from Ohmura, Hamburg, 1971

Coll. no. 880 (printed and handwritten)

€ 300 – 400



388



389

- 390 **A fine boxwood netsuke of a shishi and young.**
Mid 19th century

Seated on its hind legs, head turned, with a brocade ball carved in openwork and with a loose ball inside, the left paw protectively placed over its young. The larger shishi's eye pupils inlaid in black horn. Signed Masayoshi on a bar to the underside. Cracks.
Height 3 cm; width 4 cm

Provenance

Purchased from J. van Daalen, Utrecht,
December 1970
Coll. no. 869 (printed and handwritten)

€ 600 – 800



390

- 391 **An Edo school ivory netsuke of a shishi with a ball,**
by Gyokuyōsai. 19th century

Seated, the head slightly turned to the left with a long ribbon in his mouth, tied to the ball upon which the shishi places its forepaw. Signed Gyokuyōsai.
Height 3.3 cm

Provenance

Coll. no. 986 (handwritten)

€ 550 – 650



391

- 392 **A lacquer netsuke of two shishi.** Late 19th century

Both animals biting the other's rear paw, thus forming a nearly square shape.
Height 3.3 cm

Provenance

Purchased from J. van Daalen, Utrecht,
September 1970
Coll. no. 768 (printed)

€ 250 – 350



392



393



394



395

393 **A boxwood netsuke of a tortoise and a monkey.** First half 19th century

Climbing over the carapace of a tortoise, the monkey covers its mouth with his forepaw. Crack.
Height 2.3 cm; length 4.6 cm

Provenance
Purchased from Offermann & Schmitz at the Deutsche Kunst- und Antiquitätenmesse München, 1971 Coll. no. 613 (printed and handwritten)

€ 300 – 400

394 **A fine small ebony wood netsuke of a recumbent ox.** 19th century

Both forelegs tucked under the heavy body, the left horn replaced in stag antler. Chipped.
Height 2.4 cm

Provenance
Purchased from Alexander Pollmer, Munich
Coll. no. 939 (printed)

€ 600 – 800

395 **A boxwood netsuke of a grazing horse.** Early 19th century

The hooves placed close together with one foreleg slightly raised, a finely engraved saddle cloth is fastened with a sash wrapped and tied around the horse's body. Crack.
Height 6.4 cm

Provenance
Purchased from Bernard Hurtig, Hawaii, 11.1.1982 (original invoice available)
Coll. no. 537 (handwritten)

€ 600 – 800

396 **Two boxwood netsuke.** 19th century

a) Two playing puppies, b) a recumbent piebald puppy on a kemariball. (2)
Height a) 2.9 cm; b) 3.6 cm

Provenance

a) Purchased from Ohmura, Hamburg, October 1971; coll. no. 883 (printed and handwritten); b) purchased from Ohmura, Hamburg, October 1972; coll. no. 899 (printed and handwritten)

€ 200 – 300



396

397 **A large boxwood netsuke of an eagle and monkey.** 18th/early 19th century

Grabbing a terrified crouching monkey, whose paws seem to be clasped in prayer.
Height 4.5 cm; width 4.4 cm

Provenance

Purchased from Ohmura, Hamburg, February 1971
Coll. no. 854 (printed and handwritten)

€ 600 – 800



397

398 **A mother-of-pearl netsuke of a crane.** 19th century

Of flat shape, with finely engraved eye area, beak and feathers, both wingtips touching, forming a nearly round, mon-like netsuke.
Diameter 4 cm

Provenance

Purchased from the estate of Dr. Franz Weber, Vienna
Coll. no. 651 (printed)

€ 700 – 900



398



399

- 399 **A Kyoto school ivory netsuke of a fukurasuzume, by Genkô.** Late 18th/early 19th century

The stylised sparrow's body partly engraved with plumage, the eyes of dark horn. Signed Genkô.

Height 3,8 cm

Provenance

Collection Werner Damm

Through Grete Damm, Munich, May 1983

Coll. no. 1000 (handwritten)

€ 900 – 1.200



400

- 400 **A black wood netsuke of a tortoise.** 19th century

With head emerging from underneath the carapace, the legs closely pressed to the body, the central hexagonal segment of the carapace with an eyelet for the cord.

Height 1.6 cm; length 4.8 cm

Provenance

Purchased from Ohmura, Hamburg, August 1965

Coll. no. 673 (handwritten)

€ 250 – 350



401

- 401 **A bone netsuke of a frog and a snail on a mushroom.** Late 19th century

Both animals climbing on each side of an oval shaped mushroom cap, separated by a budding chrysanthemum branch lying across. Restoration.

Length 4 cm

Provenance

Purchased from Alexander Pollmer, Munich

Coll. no. 860 (printed)

€ 400 – 600



402

- 402 **An umimatsu netsuke of a bamboo segment.** 19th century

Carved with bamboo leaves with three dewdrops of silver. Hollowed out to the inside except for the diaphragm.

Height 4,9 cm

Provenance

Through Grete Damm, Munich, 18.11.1978

Coll. no. 689 (handwritten)

€ 600 – 800



403

403 **An umimatsu netsuke of a carp.** 19th century

The scaly body slightly curved. The eyes double inlaid in light and dark horn. Restored.
Length 7.9 cm

Provenance

Purchased from Helmut Laudenbach, Berg

€ 300 – 500



404

404 **An ivory netsuke of a votive tablet (ema), by Yoshinori.** 19th century

Depicting a galloping horse, the borders showing wood grain in engraving. Signed Yoshinori in a rectangular reserve.

Height 3.4 cm; width 3.9 cm

Provenance

Purchased from Ohmura, Hamburg, December 1966

Coll. no. 843 (printed and handwritten)

€ 400 – 600

405 **A boxwood netsuke of a hamaguri clam.** 19th century

With slightly opened valves to reveal Ryūjin's palace underneath a pine tree inside.
Width 3.8 cm

Provenance

Purchased from Ohmura, Hamburg, September 1967

Coll. no. 705 (printed and handwritten)

€ 200 – 400

[image online](#)

406 **A stag antler netsuke of a dried salmon.** 19th century

With stylised head and raised tail fin, the body with incised grid-like scales.
Length 13.8 cm

Provenance

Purchased from the estate of Dr. Franz Weber, Vienna

Coll. no. 644 (printed and handwritten)

€ 500 – 700

[image online](#)

407 **A small walnut netsuke of wild geese.** 19th century

Carved to one side with a flock of geese flying over stylised waves, the other side with a chrysanthemum flower.
Height 3.3 cm

Provenance

Purchased in Vienna, May 1961

Coll. no. 688 (printed and handwritten)

€ 200 – 300

[image online](#)



408

408 **A black-lacquered wood netsuke of a kabuki actor's headdress.** 19th century

The iconic headdress of Ichikawa Danjūro VIII in his role of Hanatogawa Sukeroku from the kabuki play of the same name.

Sukeroku is one of the eighteen celebrated kabuki plays and was staged for the first time in Edo in 1713. The play is closely linked to the Ichikawa family. Ichikawa Danjūro VIII performed in the role of Sukeroku for the first time in 1832, a role he continued to perform until his alleged suicide in 1854.

Height 4.6 cm

Provenance

Purchased from Ohmura, Hamburg, February 1971

Coll. no. 872 (printed and handwritten)

€ 300 – 500



409

409 **A brass ashtray netsuke of a kabuto.** 19th century

Cast with a stylised insect forming the helmet decoration (maedate), a separately cast hachimanza with an eyelet at the top.

Height 3.3 cm

Provenance

Purchased from the estate of Dr. Franz Weber, Vienna, March 1967

Coll. no. 846 (printed)

€ 300 – 500



410

410 **A walnut netsuke of a skull.** 19th century

With large eye sockets and long incisors, the natural cavity of the nut corresponding to the cavity of the skull.

Length 3.2 cm; height 2.6 cm

Provenance

Purchased from J. van Daalen, Utrecht, December 1972

Coll. no. 924 (printed and handwritten)

€ 350 – 550



411

411 **An ivory two-part manjū.** Late 19th century

With two billing sparrows in brown lacquer and hiramaki-e. A single cordhole to the bottom.

Diameter 3.1 cm

Provenance

Purchased from Helmut Laudenschlager, Berg, February 1979

€ 200 – 300



412



414



413



415

412 A large stag antler manjū-type netsuke of a tiger and dragon. 19th century

Of nearly round shape, carved with a tiger crouching on a huge rock, face to face with a winding dragon emerging from the hollows of the same rock.

Diameter 4.9 cm

Provenance

Purchased from Offermann & Schmitz, Cologne, at the Deutsche Kunst- und Antiquitätenmesse, Munich, 1971 Coll. no. 828 (printed)

€ 800 – 1.000

414 Two kagamibuta. Mid-19th century

The disc a) cast, depicting Kumagai Naozane or Taira Atsumori on horseback, the details accentuated in gold and copper, and b) of shibuichi and iroe-takazōgan depicting Kinko Sennin amidst waves. Both bowls of ivory. Cracks.

(2)

Diameter a) 4.3 cm; b) 4.4 cm

Provenance

a) Purchased from the estate of Dr. Franz Weber, Vienna; coll. no. 653 (handwritten); b) purchased from Alexander Pollmer, Munich, 1974; two labels each with coll. no. 788 (handwritten).

€ 400 – 600

413 A rare wooden kagamibuta. 19th century

The circular domed disc carved in relief with Hotei sitting in his bag, holding a tama in his left hand and a karako carved in relief at the edge of the bowl. A staff and a Chinese-style fan (uchiwa) carved to the reverse.

Signed Tamagawa Toyonobu saku kore.

Diameter 3.1 cm

Provenance

Gift from Grete Damm, Munich, May 1981

€ 500 – 700

415 Three ivory ojime, one wood ojime and one miniature ivory nioibin. 19th century

a) In shape of a monkey, b) in shape of a seated and pensive oni, c) a nioibin in shape of a double gourd with takaramono in Shibayama-type inlay, d) in shape of Daruma, and e) spherical, carved with two cranes in a landscape. (5) Height a) 1.8 cm; b) 2.6 cm; c) 2.9 cm; d) 1.9 cm; e) 1.5 cm

Provenance

a) Purchased from Alexander Pollmer, Munich, coll. no. 966 (printed); b) coll. no. 790 (handwritten); c) coll. no. 687 (printed and handwritten); d) purchased from Alexander Pollmer, Munich, August 1975, coll. no. 859 (handwritten)

€ 500 – 700

Private collection, Munich
Lot 416 – 435

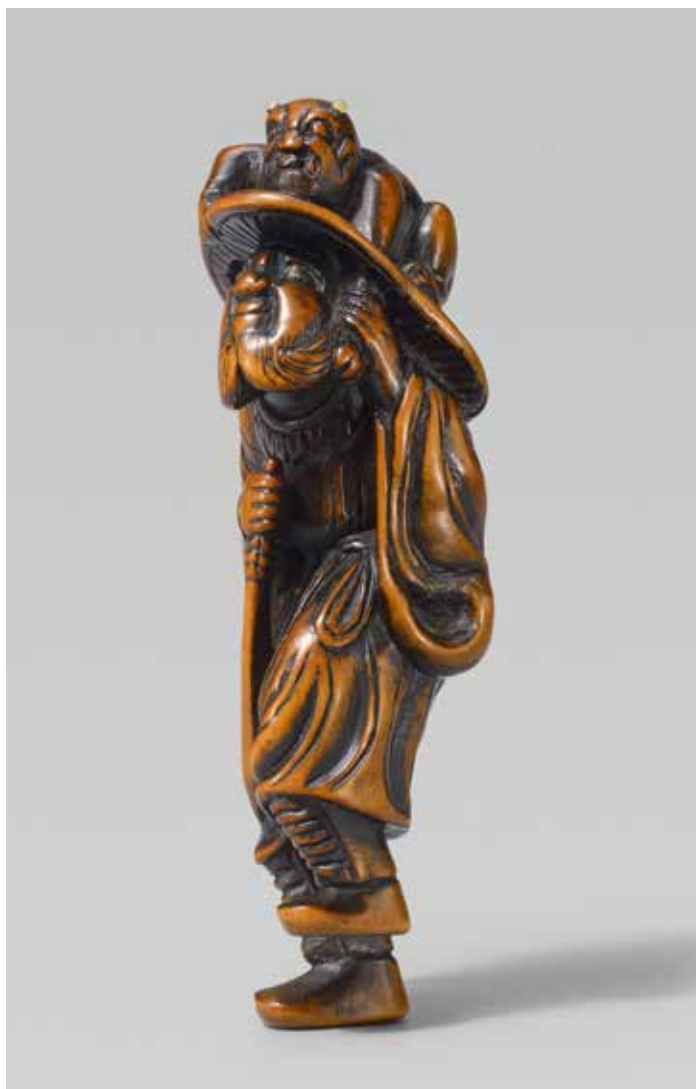
416 **A boxwood netsuke of Shôki and an oni.** Late 18th century

The demon queller standing on one foot, holding a sword in his right hand while grasping the arm of an oni sitting on his wide-brimmed, tattered hat. Inscribed Sadatsugu on an inlaid rectangular bone tablet. Height 8.7 cm

Provenance

Sotheby's, London, 9.11.2006,
lot 1102 (part of lot)

€ 2.000 – 2.400



416

417 **A fine Tokyo school inlaid ivory netsuke of an Okame, by Yasuyuki.** Around 1900

Giggling, dressed in a red (faded) kimono with large patterned flower reserves and blossoms in various silver and mother-of-pearl inlays. The cord holes stained green. Signed Yasuyuki.

Height 3.4 cm

Provenance

Acquired in 1985 from Barry Davies Oriental Art, London

€ 1.600 – 1.800



417

418 **An okimono-type ivory netsuke of two herdboys with oxen, by Hôshinsai.** Second half 19th century

One herdboy sits on the back of an ox and plays a flute while the other leads the ox by a rope and carries a staff, on an irregular base. Signed Hôshinsai and sealed Nobu.

This is a representation of two episodes from the parable of the „Ten Ox Herding Pictures“.

Height 4.2 cm; width 6.9 cm

€ 800 – 1.000



418

419 **An Edo school ivory netsuke of a karako and a cockerel on a drum, by Gyokusai.**

Second half 19th century

Lying on an oval drum, placing his hand on the back of a cockerel. An opening to the drum's side revealing a hen with her chick. The drum nails of black horn. Signed Gyokusai to the underside.

A group of a cockerel with a hen and chicks can be read as a symbol of domestic harmony especially when paired with a drum which has been sounded to assemble troops in times of war and which now functions as a roosting place.

Width 3.5 cm; height 2.7 cm

€ 700 – 900



419



420

- 420 **An ivory okimono-type netsuke of a courtier, by Masayuki.** Second half 19th century

Kneeling, both hands hidden under long sleeves, holding a fan in his right hand, while the other is placed on his short sword (tantô). Hair and trousers stained black. Signed Masayuki with kaô in a gourd-shaped reserve.

Height 4.7 cm; width 4.9 cm

€ 1.000 – 1.200



421

- 421 **A boxwood netsuke of a court servant (eji).** First half 19th century

Squatting, and holding a closed umbrella clamped between his legs.

Height 5 cm

€ 1.200 – 1.400



422

- 422 **An ebony wood netsuke of a toshiotoko at setsubun, by Gyokusen.** Early 19th century

The toshiotoko, a male who was born in the corresponding upcoming animal year, with roasted beans on a sanbô in his left hand, throwing beans at three oni, toppling over at his feet. The man's eye pupils inlaid. Signed Gyokusen with kaô on a slightly raised oval reserve.

Height 4.3 cm; length 4.3 cm

€ 1.200 – 1.400

423 **A boxwood netsuke of a sleeping sarumawashi.**
18th/early 19th century

Lying asleep with a smile, his head resting on his left hand while the monkey behind him reaches for the food basket.

Length 6.6 cm

Provenance

Sotheby's, London, 9.11.2006, lot 1102 (part of lot)

€ 800 – 1.000



423

424 **An ivory netsuke of a sleeping sarumawashi.**
Early 19th century

The old monkey trainer has fallen asleep while the little monkey in a sleeveless vest is nibbling at a fruit.

Height 2.3 cm; length 8.1 cm

€ 500 – 700



424

425 **A Tokyo school ivory shunga netsuke of a young woman with a scroll, by Hakuunsai II.**
Late 19th century

Looking up smiling, holding a scroll in her hands. Her elaborately coiffed black-stained hair adorned with a glass pin. Her lips, the collar of her kimono as well as the inside of her sleeves stained red.

Her spread out kimono reveals her pubic area.

Signed Hakuunsai.

Height 4.2 cm

Literature

Illustrated in: Japanische Netsuke von Meistern. Okimono, Inro, Galerie Zacke, Vienna Kitzendorf 2005, cat. no. 42

€ 1.400 – 1.600



425

426 **A Edo school ivory netsuke of an octopus fighting two monkeys, by Ikkōsai.** Mid-19th century

Seated on the back of an overturned mortar the octopus tries to free himself from the attack of two monkeys emerging from beneath the mortar. The eye pupils of black horn. Signed Ikkōsai in an oval reserve.

Height 2.8 cm; length 3.5 cm

Provenance

Collection Dr. Richard Wolf, Frankfurt

Acquired in the German art market in 1984

Literature

Illustrated in: Richard Wolf, *Die Welt der Netsuke*, Wiesbaden 1970, p. 184

€ 2.400 – 2.600



427 **A black wood netsuke of a toad.** 19th century

Seated on a tree trunk's circular cross-section, head raised. The himotôshi lined with green-stained bone.

Height 3.8 cm; length 4.5 cm

Provenance

Collection Albert Brockhaus (1850–1921), Leipzig (sold at Klefisch, Cologne, 23.5.1981, lot 161)

Collection Hanns Jatzlau, Hannover (sold at Lempertz, 10.6.2006, lot 993)

Exhibition

Netsuke und Farbholzschnitte aus Japan, Gallery Zacke, Vienna, 2006

Literature

Illustrated in: P. Jirka-Schmitz, Random Thoughts on Toads, in: INCS, Vol. 26, no. 1 (Spring 2006), fig. 5 and 6

€ 400 – 600



427

428 **A reddish-brown wood netsuke of a group of fifteen tortoises,** by Yôzan. Early 19th century

Partly climbing on top of each other amidst waves, one tortoise detachable like the peg of a manjû bearing an eyelet for the cord.

Signed Yôzan.

Length 4.5 cm

Provenance

Collection E. A. Wrangham (1928–2009), Northumberland (sold at Bonhams, London, 15.5.2012, lot 102)

€ 1.200 – 1.400



428

429 **A boxwood netsuke of a snail on a bucket.** Mid-19th century

Slithering over the side of a bucket, the stretched out head resting on the bucket wall, the body forming the himotōshi. Inscribed Shigemasa with kaō to the flat bottom of the bucket.

Height 3.2 cm; width 3.3 cm

Provenance

Christie's, New York, 12.9.1995, Lot 35

€ 2.500 – 2.700



430 **A black wood netsuke of a crane and two young.** 19th century

The parent hatching an egg, with two young birds at its side, the head turned pecking one of them. The eyes reserved from the dark-stained wood.

Height 2.6 cm; width 3.4 cm

Provenance

Christie's, London, 23.6.1995, lot 407
€ 1.600 – 1.800



430

431 **A boxwood netsuke of a cockerel next to a rock**

Seated next to a rock, the head turned, facing a plant with berries, the eyes of black horn.

Inscribed Kisui.
Height 2.7 cm; width 3 cm

Provenance

Nagel, Stuttgart, 31.5.2003, lot 1823

€ 1.800 – 2.000



431



432

432 **An ivory and metal manjū.** Mid-19th century

With a fly delicately worked in shibuichi and copper, sitting in the middle of an ivory bowl and a metal eyelet to the reverse.

Diameter 3,8 cm

Provenance

Nagel, Stuttgart 13.11.2004, Lot 2648

€ 350 – 400



433

433 **A lacquered wood netsuke of two ladybugs on an eggplant.** 19th century

The eggplant covered with shiny black lacquer, partly covered by leaves of brownish lacquer with aogai speckles.

Height 5.1 cm; width 2.3 cm

€ 1.000 – 1.200

434 **A fine black wood and light boxwood netsuke of a mask box, by Masayoshi.** Mid-19th century

Carved on the top with the nô masks of Jô and Uba, the sides finely engraved with kiri and chrysanthemums, the box opening to reveal poets Kakimoto no Hitomaru with a brush, Ono no Komachi with a fan and a third poet. Signed Masayoshi to the underside. Height 2.9 cm; width 3.4 cm (closed)

Provenance

Collection Mark T. Severin (1906–1987), Belgium (sold at Sotheby's, London, 15.11.1989, lot 92), Acquired at the above auction

€ 1.800 – 2.000



434

435 **A boxwood netsuke of a Daruma roly-poly-doll, by Masakazu.** 19th century

Of flattened shape, the face with a stubby nose and pouting lips. Signed Masakazu. Height 4.5 cm

Provenance

Nagel, Stuttgart, 22.5.2004, Lot 3048

€ 1.000 – 1.200



435

Collection Karl M. Schwarz (1926 – 2007), Vienna
Lot 436 – 447

436 **An ivory netsuke of a toad with Tekkai Sennin's soul.** Early 19th century

A huge toad exhaling Tekkai Sennin's soul while the small sennin figure attempts to climb up its right hind leg. Finely carved and engraved, the details stained black, the toad's eyes of light horn with black eye pupils. Inscribed Masatsugu in an oval reserve.

Numerous pieces bearing a similar signature are listed in the MCI (p. 481).

Provenance

University of Pennsylvania Museum, USA, acc. no. 23-26-34 (handwritten in black ink)

Literature

Illustrated in: Karl M. Schwarz, *Netsuke Subjects*, Vienna 1992, p. 39, no. 50
Netsuke Kenkyukai Study Journal, vol. 12, no. 4 (1985), p. 31

€ 800 – 900



436



437



438

437 **An ivory netsuke of a Chinese musician.** Around 1800

Laughing, holding a trumpet in his right hand and a chrysanthemum branch in his left, which he uses to tease a karako standing next to him. Finely and meticulously carved, partly polished, details darkly stained.
Height 5 cm

Literature

Illustrated in: Karl M. Schwarz, *Netsuke Subjects*, Vienna 1992, p. 85, no. 214

€ 550 – 600

438 **An ivory netsuke of two shôjô, by Koseki.** 19th century

Both tipsy, one of them sitting on top of an overturned sake jar, the second lying on his side with half his body inside the jar, holding a ladle in his right hand. Finely carved, polished and engraved. Details darkly stained. Signed Koseki.
Height 4.2 cm

Literature

Illustrated in: Karl M. Schwarz, *Netsuke Subjects*, Vienna 1992, p. 49, no. 88
International Netsuke Society Journal, Vol. 12, no. 1 (1985), p. 23

€ 350 – 450



439

439 **A marine ivory shunga netsuke of a seated man.**

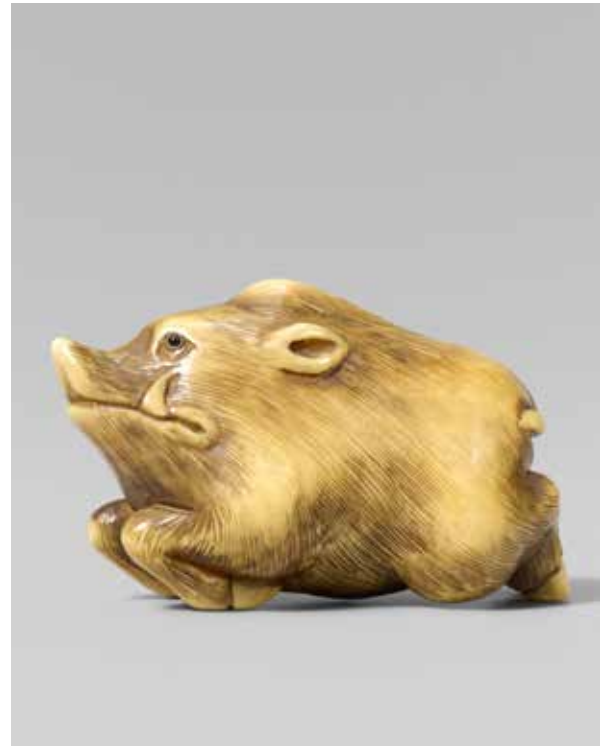
Late 19th century

Seated, a boy standing to his right, both cheerfully laughing as they look at a string of coins laid across the man's erect penis. Finely and meticulously carved, partly stained. Probably a work of the Tomochika school. Height 4.4 cm

Literature

Illustrated in: Karl M. Schwarz, *Netsuke Subjects*, Vienna 1992, p. 87, no. 218

€ 650 – 750



440

440 **An ivory netsuke of a boar.** Second half 19th century

Gallopig, the eyes inlaid in black horn. Finely carved and stained, partly polished through use. Kaō.

The boar is said to be the bravest of all animals. It is the twelfth of the zodiac animals and embodies the hours between 9 to 11 pm as well as the month of October. The kaō resembles the one of Shuyo. (cf. Lazarnick, p. 1013) Length 4.7 cm

Literature

Illustrated in: Karl M. Schwarz, *Netsuke Subjects*, Vienna 1992, p. 125, no. 351

€ 650 – 750

441 **An ivory netsuke of Urashima Tarô.**
19th century

Rendered as a young man, standing, carrying the turtle he rescued over his shoulder and holding a lidded box in his left hand which he ends up opening, contrary to Otohime's instruction. Finely carved and partly stained. Chipped.

The many representations of the tale of Urashima Tarô reflect its popularity both in Japanese arts in general and in netsuke in particular.

Height 4.4 cm

Literature

Illustrated in: Karl M. Schwarz,
Netsuke Subjects, Vienna 1992, p. 77, no. 189

€ 450 – 550



441

442 **A marine ivory netsuke of Okane.**
19th century

Preventing a horse from fleeing, she steps on the reins dragging on the ground. Finely carved and accentuated with a dark patina. Inscribed Minkoku in a rectangular reserve.

Young Okane from Ōmi (Shiga prefecture) was believed to be so strong as to be able to accomplish this task easily. This subject underlies the kabuki play "Ōmi no Okane".

Length 4.5 cm

Literature

Illustrated in: Karl M. Schwarz,
Netsuke Subjects, Vienna 1992, p. 75, no. 178
Compare the signature in: MCI, p. 522

€ 700 – 850



442



443

443 An ivory netsuke of a bird-of-paradise. Early 19th century

Perched on a ring fixed to the top of a pillar, with six long and finely engraved peacock-like feathers bearing a nice golden yellow patina.

The so-called bird-of-paradise (jap. sankôchô) is said to be Japan's most beautiful bird. For a more dynamic study of the same motif see Neil Davey, *The M.T. Hindson Collection*, London 1982, p. 50.
Height 5.5 cm

Literature

Illustrated in: Karl M. Schwarz, *Netsuke Subjects*, Vienna, 1992, p.129, no. 366

€ 900 – 1.200



444

444 An ivory netsuke of a cluster of shells, by Nagamitsu. 19th century

Eight clams lying open on top of each other with miniature depictions of the Ômi hakkei (Eight views of Lake Biwa). Nicely worn. Signed Nagamitsu saku.
Length 4.5 cm

Literature

Illustrated in: Karl M. Schwarz, *Netsuke Subjects*, Vienna 1992, p. 133, no. 381
Compare a similar model in: Ueda Reikichi, *Netsuke Handbook*, Rutland, Tokyo, 1973, p. 96
Compare the signature with one of a Tokyo carver, active in 1820-50, in: MCI, p. 585

€ 750 – 850



445

445 An ivory netsuke of a miniature carving between two aoi-leaves. Late 19th century

Two long-stemmed aoi-leaves lying on top of each other with a minutely detailed rendering of an equestrian game (yabusame) to the inside. The surface of the leaves finely polished, with a glossy patina. Signed Masahiro and a seal Hosai on a raised reserve.
Width 4.1 cm

Provenance

Lempertz, Cologne 10.6.2006, lot 1035

Literature

Compare the signature in: MCI p. 414

€ 700 – 800

446 **An ivory netsuke of quails on millet.**
Late 19th century

One looking up, the other one pecking the millet branches. Finely carved and engraved, feathers and details darkly stained, the eyes inlaid in black horn. Inscribed Okatomo in a raised rectangular reserve.

This work is a later study in the style of this Sôken Kishô artist who loved this subject.
Length 4.9 cm

Literature

Illustrated in: Karl M. Schwarz,
Netsuke Subjects, Vienna 1992, p. 127, no. 356

€ 800 – 1.200



446

447 **An ivory netsuke of an inubariko.**
Second half 19th century

A dog-shaped lidded box just like those made out of papier maché found in most Japanese households. Delicately carved with dark accentuations, the dog's face with human features. Inscribed Shinsho.

These containers stored amulets for newborns but underwent a change in usage when they were later used to store items for the courtesan's intimate care.

Length 3,5 cm

Literature

Illustrated in: Karl M. Schwarz,
Netsuke Subjects, Vienna 1992, p. 117, no. 326
Compare similar pieces in: Henry Joly,
The Walter L. Behrens Collection, Glendining
London, 1914, no. 994 and Richard Barker and
Laurence Smith, Netsuke, London 1976, no. 122

€ 850 – 1.000



447

Private collection, Paris
Lot 448 – 461



448 **A large ivory netsuke of a shishi and young.**
Late 18th century

The head turned, the mouth wide opened with
a loose ball inside, a young shishi climbing
over the parent's back.
Height 2.8 cm; length 5.3 cm

€ 1.000 – 1.200

448

449 **A tall ivory netsuke of Seiôbô.**

Late 18th century

The Queen Mother of the West stands upright, her coiffure finely carved and dressed in a long robe, holding a peach branch in her right hand and a Chinese-style stiff fan in her left.

Height 10.9 cm

€ 1.600 – 1.800



449

450 **An ivory netsuke of a flying tennin, by Hômei.**

Late 19th century

Bare-chested, with a raised head and grabbing her long billowing shawl, a bird-shaped ornament in front of the chignon. Signed Hômei in an oval reserve.

Length 6.2 cm

€ 700 – 900



450



451

- 451 **A walrus tusk ryûsa manjû of Kyoyû and Sôfu.**
Second half 19th century

Kyoyû, inlaid in silver, sitting on a rock next to a waterfall, washing his ear, the reverse carved with his companion Sôfu and his ox.

Xuyou (jap. Kyoyû) counsellor to the Chinese emperor Yao declined the offer of succeeding him and washed his ears in a nearby waterfall, to clean out the proposal of the emperor. At the river he met his companion Chaofu (jap. Sôfu) with his ox and told him about the imperial offer upon which the latter cleaned his ears as well and lead his ox away from the riverbank to keep him from drinking from this contaminated water.

Diameter 4.1 cm

€ 700 – 900



452

- 452 **An ivory netsuke of a grazing horse.**
Late 18th/early 19th century

Standing with its legs close together, the head lowered, the mane accurately parted, the bulky body covered with a saddle cloth secured with a large bow. The eyes of black horn. Restored. Height 5.5 cm; width 4.5 cm

€ 1.000 – 1.200



453

- 453 **An ivory netsuke of a dog with a ball.**
Mid-19th century

The head turned back, clapping a ball and wearing a collar band around its neck. The eyes of black horn. Inscribed Raku. Height 3.3 cm; width 4 cm

€ 700 – 900

- 454 **A fine boxwood netsuke of a shishi on a rock,**
by Kokei. Early 19th century

Standing on its hind legs clinging to a rock with its forepaws. The eye pupils of dark horn. Signed Kokei in a slightly raised oval-shaped reserve. Chipped. Height 3 cm; length 4 cm

€ 1.400 – 1.800



454

- 455 **An ivory netsuke of a recumbent tiger.**
Late 18th century

Hissing, the head turned, the long tail placed over the back. The eye pupils of light brown horn. Height 3.1 cm; width 5 cm

€ 900 – 1.200



455

- 456 **Three ivory netsuke.** Late 18th/19th century

a) A mandarin duck, inscribed Tadayoshi in a rectangular reserve, b) a stretching Daruma, inscribed Sōshi to the underside, and c) Saigyō Hoshi admiring Mount Fuji. (3)

a) Length 3.9 cm; b) height 6.9 cm; c) width 2.7 cm

€ 600 – 900



456

- 457 **Two wood netsuke.** 19th century

a) A cockerel and a hen, the eyes of bone and black glass, signed Nobuyuki with kaō, and b) a snail on a leaf, inscribed Masakazu. Chipped. (2)

a) Height 4.1 cm; b) length 6.1 cm

€ 400 – 600

[image online](#)



458

458 An ivory group of seven ginkgo nuts, by Kiyokatsu. 19th century

The nuts are arranged into a large and compact composition, showing one single three-sided nut, in Japan considered to bring good luck, parallel to the auspicious meaning of the four-leaved clover in the West.

Height 2.3 cm; width 4.6 cm

€ 600 – 800



459

459 A lacquer mask netsuke of a monkey. 19th century

The face rendered in gold maki-e, the open mouth with two rows of silvery teeth and a red mouth cavity, the fur rendered with very fine lines of silvery grey lacquer.

Signed Deme Tō(?)man.

Height 4 cm

Provenance

Beaussant-Levêfre, Paris, 19.10.2011, lot 125

€ 700 – 900



460



461

460 **Two ivory netsuke.** 19th century

a) A group of nine nō and kyōgen masks, signed Rakuyō,
 b) Ryūsa-manjū. Overlapping shapes carved with otsu-e
 figures, on the front: Fujimusume, Oni nenbutsu and a
 blind man, on the reverse: Yakko, Kadori Myōjin and a
 falconer, signed Minkoku on the reverse. (2)
 Diameter a) 5.1 cm; b) 3.9 cm

€ 700 – 900

461 **Two manjū.** Late 19th century

a) A silver manjū of a yawning Daruma. Signed Tomogawa
 in an oval-shaped, and b) a ryūsa-manjū with a shakudō
 menuki of plum blossoms with dewdrops in gold, applied
 to an ivory bowl carved with peonies in openwork.
 Chipped. (2)
 Width 4 cm each

Provenance

a) Ader Nordmann, Paris, 20.6.2012

€ 900 – 1.200

Netsuke, Sagemono and Inrô from various collections

Lot 462 – 499



462

462 A fine ivory netsuke of a grazing horse.
Late 18th century

The hooves placed close together, the right foreleg slightly bent, the head with the deeply carved mane lowered. The horse's tail rendered in low relief, the eye pupils of black horn.
Height 6 cm; width 4.5 cm

Provenance

Collection Martin S. Newstead, Switzerland
(sold at Sotheby's, London, 18.11.1984, lot 133)
Private collection, Germany
Barry Davies Oriental Art, London
Private collection, England

Literature

Published in: Barry Davies Oriental Art,
Netsuke and Inro from European Collections,
London 2002, cat. no. 139

€ 2.000 – 2.400



463 **An ivory netsuke of a Niô.** Early 19th century

Standing with both hands forming fists, the mouth open with a visible tongue. The eye pupils of black horn. Signed Masakazu in an oval reserve. Loss to the garment, one arm and leg restored.

Height 6.1 cm

€ 300 – 400



463

464 **Stretching Daruma.** Wood and red lacquer.

Late 19th century

Yawning after waking up from the nine-year-long meditation, Daruma stretches his arms and legs. His robe lacquered red, his teeth and eyes of bone, the eye pupils of horn. Signed Shunsai on an inlaid ivory tablet. Chipped.

Height 3.4 cm; length 5.9 cm

€ 200 – 300



464

465 **A boxwood and ivory netsuke of a dancing monkey, by Tōkoku.** Late 19th century

Standing in a dancing posture with a large straw hat with red-lacquer loops, a jacket and holding a fan in his hands. Boxwood, the mask of ivory with darkly stained eyes and further details. Signed Tōkoku on a red-lacquer tablet.

Height 3.8 cm

Provenance

Pabst Collection, sold at Klefisch, Cologne
Private collection, Rhineland, acquired at the above auction

€ 800 – 1.000



465



466

466 A rare ivory netsuke of a foreigner on a dromedary. 18th century

Seated on a saddle cloth and beating the big drum clamped under his left arm. The dromedary standing on an oval base the head turned, its right front leg stepping forward. The dromedary's eyes and the drum's rim inlaid in dark and light horn (some inlays lost).

The Japanese word ,rakuda' (camel) is the homophone with the informal and discreet sexual phrase ,raku da' (that feels nice). In view of the tall hat, the figure might be a Korean envoy to Japan. To heighten his exoticism he is shown seated on a dromedary. Height 4.6 cm

€ 1.400 – 1.600



467

467 An ivory netsuke of a Dutchman playing the shawm. Late 18th century

Sitting in an upright position and playing the shawm with both hands, dressed in a long robe with engraved clouds and wearing a brimmed hat and a curly wig. Old chip to the left elbow. Height 4.5 cm

Provenance

Private collection, The Netherlands

€ 1.000 – 1.200

468 **A very good ivory netsuke of a shishi, by Mitsuharu.**
Late 18th/early 19th century

Seated on its hind legs and placing its forepaws onto a ball while looking back and roaring fiercely. The wide opened mouth with a loose ball inside. The bushy mane with well carved hair strands swirling into elegant tufts. The eye pupils of black horn. Signed Mitsuharu in an oval reserve.
Height 4.6 cm

€ 3.000 – 4.000



469 A fine Kyoto school ivory netsuke of a group of three rats, by Okakoto. Around 1800

Forming a compact composition, two rats circling each other while one offspring climbs on the largest rat's back. The eyes of brown horn. Signed Okakoto in a rectangular reserve. Restored. Chipped.

Height 2.8 cm; max. width 4.7 cm

€ 2.500 – 3.000



470 **A wood netsuke of a ripe eggplant.** Around 1900

The skin burst open to reveal the fruit, with a fly and a bug sitting on one of the leaves, inlaid in bone and mother-of-pearl.

Length 4 cm

€ 300 – 500



470

471 **A red lacquer egg-shaped two-part manju.**
19th century

Carved with a Chinese sage under a blossoming prunus tree to one part, and a sage under a tall pine tree to the other. Black lacquer to the inside and a copper eyellet.

Length 4 cm

Provenance

Private Collection, Rhineland

€ 1.200 – 1.400



471

471A **A large ivory two-part peg manjū.**
Second half 19th century

Map of the Japanese islands with all the provinces written in kanji in black-stained engraving. Inscription above reading Nanbu daihonshô no Tanshû nikoku shin zu.

Diameter 5.8 cm

€ 800 – 900



471A

472 **A macabre boxwood netsuke of a skull.**
20th century

Stylised, with huge eye sockets, two bones attached to the skull.

Height 4.9 cm

€ 250 – 350



472



473 **A stag antler kiseruzutsu.**
19th century

Of otoshi-zutsu type, carved with a peasant protecting himself in a thunderstorm while Raiden, the god of thunder above him beats his drums and sends down thunderbolts. A swirl of cloud forms the himotōshi. Signed Rakumin to the reverse. Length 17.6 cm

Provenance
Kolodotschko Collection

€ 800 – 1.000

474 **A stag antler kiseruzustu.**
19th century

Of otoshi-zutsu type, carved with a vase with pomegranate branches and reishi on a Chinese stool, symbols for a long life. Length 20.4 cm

Provenance
Kolodotschko Collection

€ 300 – 500

475 **Two stag antler kiseruzutsu.**
19th century

a) Of otoshi-zutsu type, carved in relief with a descending dragon fish, its tail fin forming the himotōshi, signed Rosetsu, and b) of musō-zutsu type, carved in sunken relief with a writhing dragon clutching a tama, signed Senzan in seal form. (2)

Length a) 20.7 cm; b) 22.2 cm

Provenance
b) Sold at Klefisch, Cologne, 2006
Collection E.A. Wrangham (1928–2009),
collection no. 2235, sold at Bonhams,
London, 15.5.2012, lot 154
Kolodotschko Collection, acquired at
the above auction

€ 700 – 900



476 **Two stag antler kiseruzutsu.**
Second half 19th century

a) Of musô-zutsu type, carved with Jurôjin and Fukurokuju and a boy in front of them underneath a pine, restored, and b) of otoshi-zutsu type, carved in relief with Fukurokuju and three karako making music. (2)
Length a) 20 cm; b) 19.5 cm

Provenance
Kolodotschko Collection

€ 500 – 700

477 **A fine wood kiseruzutsu.**
Second half 19th century

Of musô-zutsu type, engraved in fine katakiri with Shoki, the demonqueller, grabbing an oni underneath a pine. The rim lined with silver.
Length 21.4 cm

Provenance
Kolodotschko Collection

€ 500 – 700

478 **Two musô-zutsu type kiseruzutsu.**
Late 19th century

a) Of ivory. Finely carved with Hotei with his staff and a karako sleeping on his back, signed Kyôsai with a seal horu (carved), and b) of wood, carved in sunken-relief with Hotei sitting on his bag, signed ...gai tô. (2)
Length a) 21.8 cm; b) 21.6 cm

Provenance
Kolodotschko Collection

€ 300 – 500



479

479 **A kiri-wood tonkotsu.** Second half 19th century

Displaying a large figure of the wind god Futen in high relief takamaki-e and mother-of-pearl striding through clouds, on the reverse Raiden's drums and drumsticks. Height 8.2 cm; width 10.8 cm

€ 300 – 500



480

480 **A three-case inrō.** Late 18th century

Displaying pinks (nadeshiko) by a trellis, in takamaki-e and silvery lacquer, the flowers and poles inlaid in aogai and greyish metal, all on a nashiji ground. Black lacquer and fundame to the inside. Signed Tōyō with kaō. Fruit kernel ojime and modern wood netsuke of a frog on a mushroom, signed.

Height 6.3 cm; width 6.9 cm

€ 1.000 – 1.400

481 **A fine bamboo and metal pipe (kiseru).** Late 19th century

The tube (rau) of bamboo with cloud scrolls, the mouth piece and bowl of shibuichi and gilt, both engraved with pine trees and clumps of slender needles, signed Mitsuharu and kaō.

Length 19.7 cm

€ 200 – 300



481

482 **A small roundish two-case inrô.** 18th/19th century

Displaying a gibbon in a bare tree covered with lianas, who is reaching for the reflection of a crescent moon (on the other side of the inrô) in takamaki-e, hiramaki-e and brown lacquer on a blackish-brown lacquer ground. Black lacquer to the inside. Reworked. Along with a wood netsuke of a crawling monkey.

Height 5.1 cm; width 5.3 cm

€ 500 – 600



482

483 **A four-case inrô.** Late 18th/early 19th century

Displaying a plum blossom branch in takamaki-e and hiramaki-e on a black lacquer ground, one blossom covered with goldfoil, another blossom of mother-of-pearl. Black lacquer and fundame to the inside. Stone ojime.

Inside paper label with three initials and No 17. Height 8 cm; width 5 cm

€ 700 – 900



483



484



485

484 **A four-case inrô.** Around 1800

Displaying a jumping and a recumbent shishi in high takamaki-e on a red lacquer ground with very fine kirikane. The eyes of glass. Fundame to the inside. Small pinkish stone ojime and wood netsuke of a shishi. Height 6.2 cm; width 5.7 cm

€ 700 – 900

485 **A four-case inrô.** Early 19th century

Displaying on one side the pavilion built out into Lake Biwa at Katada and on the other side the bridge at Seta in takamaki-e, hiramaki-e, aogai, gold-foil and kirikane on a black lacquer ground with a little nashiji. Nashiji and fundame to the inside. Small chip and restoration to the gold-foil. Small stone ojime and modern wood netsuke of a cockerel, signed. Height 7.8 cm; width 5.7 cm

€ 700 – 900

486 **A four-case inrô.** Early 19th century

Displaying fukujusô on both sides, in hiramaki-e on a black lacquer ground. Nashiji and fundame to the inside. Height 8.2 cm; width 4.5 cm

€ 600 – 700



486



487 A four-case inrô. 19th century

Displaying an octopus and a bonito on one side and tai and tobiuo on the other side, in iro-e togidashi on a shibui-chi-coloured ground. In the manner of Shiomi Masanari. The cord holes lined with shakudô. Nashiji and fundame to the inside.

Height 6.7 cm; width 5.5 cm

Provenance

Collection E.A. Wrangham O.B.E. (1928–2009), Northumberland, Great Britain, Eskenazi, London, 1974 Klefisch, Cologne, 23.5.1975, lot 638

Literature

Published in: Eskenazi, Japanese inro from the collection of E A Wrangham, London 1974, cat. no. 54

€ 2.200 – 2.400



488

488 A four-case inrô. 19th century

Displaying a flying crane above an old tree trunk and pine branches on the reverse, in takamaki-e and hiramaki-e with a little kirikane on a black lacquer ground. Nashiji and fundame to the inside. Minor damage. Along with a yellow ojime and a boxwood netsuke of a clam with a pavillion inside, signed Mitsunobu.

Height 7.6 cm; width 5.5 cm

€ 500 – 600



489

489 A four-case inrô. 19th century

Displaying two tengu sitting in a shallow basket amidst sugi branches on one side, and an oni with a pestle grinding in a mortar on the other side, in takamaki-e, red, green, brown and black lacquer with small gold-foil inlays on a sabiji ground imitating iron. Signed with a large seal reading Takamitsu/Kôkô. Black lacquer and fundame to the inside. Ojime in shape of a metal cylinder with patterns in gold and a modern wood netsuke of two frogs.

Height 7.1 cm; width 5.6 cm

€ 800 – 1.200

490 **A four-case wood inrô.** Second half 19th century

Displaying a chirping bird on a cherry blossom branch on one side and a camellia branch on the other side, in takamaki-e, silvery, black and reddish lacquer on the natural wood with a fine grain. Inscription to the inside of the lid reading Seisen'in hôin with kaô in red lacquer. Nashiji and fundame to the inside. Height 7.8 cm; width 5.1 cm

€ 500 – 800



490

491 **A four-case inrô, 5-tlg.** 19th century

Displaying a thatched hut underneath a blossoming plum tree and bamboo in hiramaki-e on kinji. Inscribed Shiomi Masanari and red seal Masanari. To the inside nashiji and fundame. Dents to the top and traces of usage. Large chalcedony ojime. Height 7.9 cm; width 5 cm

€ 700 – 800



491



492

492 **A five-case sheath inrô.** 19th century

Displaying blossoms and ferns in togidashi on a very fine nashiji ground, the sheath displaying a shokkô pattern filled with hanabishi, in hiramaki-e on kinji. Nashiji and fundame to the inside. Restored.

Height 9 cm; with 5.6 cm

€ 900 – 1.000



493

493 **A four-case inrô.** Late 19th century

Displaying three goldfish in high takamaki-e and red lacquer on a blackish ground with very fine gold dust. Black lacquer and fundame to the inside. Probably reworked. Paper label with the collection no. 113 to the inside.

Height 8.3 cm; width 4.9 cm

€ 600 – 700



494 A four-case Shibayama-inrô. Late 19th century

Displaying on one side an oni walking under a tattered umbrella and holding a basket with peonies and wisteria and on the other side a hanging basket with same flowers and a basket lid, all rendered in mother-of-pearl, tortoiseshell, bone, partly stained green, and coral on a kinji ground. Part of the basket lid restored, the kinji warped in various areas and some cases can no longer be opened. Cloisonné ojime. Height 8.8 cm; width 6.4 cm

Provenance
Dieter Sandvoss, Hannover

Literature
Illustrated in: Galerie Sandvoss, Netsuke inrô sagemono, Hannover without date, cat. no. 171

€ 1.800 – 2.000



495

495 **A four-case inrô.**
Late 19th century

Displaying a continuous scene of a samurai on horseback riding through a river, on the banks a very large an old pine whose stem is supported by several poles, in takamaki-e, hiramaki-e, black and red lacquer and kirikane on a silvery gray (shibuichi) lacquer ground. Signed Kajikawa saku. Nashiji and fundame to the inside. Height 9.5 cm; width 5.7 cm

Provenance

Collection J. Prieur (collector's paper label in the top case with the number 241B in ink)
Bonhams, London, 12.11.2015, lot 87 (unsold)
Private collection, Paris

€ 1.800 – 2.200



496

496 **A three-case inrô.**
Late 19th century

Displaying three flying crows in brown and black lacquer on a red lacquer ground. The cord runners covered with sheet silver, damaged. To the inside black lacquer and fundame. Height 8.1 cm; width 5.2 cm

€ 800 – 900



497

497 **A four-case inrô.**
19th/20th century

Displaying three cranes on one side and two cranes on the other, in golden, beige-coloured and a little red lacquer on a roiro lacquer ground. To the inside nashiji and fundame. Cracks, newly relacquered, cases stick together. Small coral-coloured ojime and stag antler netsuke of a peasant. Height 9.7 cm; width 5 cm

€ 1.200 – 1.300

498 **A three-case silver-plated inrô.**
Late 19th century, possibly after 1891

Displaying a young mother weaving a bamboo courtain (sudare) placed over a frame and a young boy with a tengu mask sitting in front of it and frightening a cat jumping up the frame, on the reverse hibiscus, susuki and a butterfly in engraving. Gilding to the inside. Small metal ojime with a prunus branch and flying bird and a kagamibuta with a disc of white metal engraved with a landscape and an imitation carved lacquer bowl. Height 7.7 cm; width 5.5 cm

Provenance
Private collection, Paris

€ 1.000 – 1.200



The design is featured in the illustrated book *Shinko chōkoku zusen*, 1891, p. 3a, there entitled „sudare ami“ (weaving a bamboo courtain).



498

499 **A fine bronze and silver miniature writing set (yatate).**
2nd half 19th century

The gourd with two leaves and one flower, vines, tendrils and dewdrops of silver, the largest leaf forming the hinged cover of the ink container, the double gourd's tip with a screw stopper. The thickest tendril forming the himotōshi. One tendril missing. Length 8.7 cm

Provenance
Private collection, Rhineland

Literature
Compare a similar piece in: Patrizia Jirka-Schmitz, *Netsuke, Gürtelschmuck aus Japan, Die Sammlung Trumpf*, Stuttgart 2000, cat. no. 826, p. 371, and *MCI*, New York 1986, p. 1035

€ 500 – 600



499

Versteigerungsbedingungen

1. Die Kunsthaus Lempertz KG (im Nachfolgenden Lempertz) versteigert öffentlich im Sinne des § 383 Abs. 3 Satz 1 BGB als Kommissionär für Rechnung der Einlieferer, die unbenannt bleiben. Im Verhältnis zu Abfassungen der Versteigerungsbedingungen in anderen Sprachen ist die deutsche Fassung maßgeblich.

2. Lempertz behält sich das Recht vor, Nummern des Kataloges zu vereinen, zu trennen und, wenn ein besonderer Grund vorliegt, außerhalb der Reihenfolge anzubieten oder zurückzuziehen.

3. Sämtliche zur Versteigerung gelangenden Objekte können im Rahmen der Vorbesichtigung geprüft und besichtigt werden. Die Katalogangaben und entsprechende Angaben der Internetpräsentation, die nach bestem Wissen und Gewissen erstellt wurden, werden nicht Bestandteil der vertraglich vereinbarten Beschaffenheit. Sie beruhen auf dem zum Zeitpunkt der Katalogbearbeitung herrschenden Stand der Wissenschaft. Sie sind keine Garantien im Rechtsinne und dienen ausschließlich der Information. Gleiches gilt für Zustandsberichte und andere Auskünfte in mündlicher oder schriftlicher Form. Zertifikate oder Bestätigungen der Künstler, ihrer Nachlässe oder der jeweils maßgeblichen Experten sind nur dann Vertragsgegenstand, wenn sie im Katalogtext ausdrücklich erwähnt werden. Der Erhaltungszustand wird im Katalog nicht durchgängig erwähnt, so dass fehlende Angaben ebenfalls keine Beschaffenheitsvereinbarung begründen. Die Objekte sind gebraucht. Alle Objekte werden in dem Erhaltungszustand veräußert, in dem sie sich bei Erteilung des Zuschlages befinden.

4. Ansprüche wegen Gewährleistung sind ausgeschlossen. Lempertz verpflichtet sich jedoch bei Abweichungen von den Katalogangaben, welche den Wert oder die Tauglichkeit aufheben oder nicht unerheblich mindern, und welche innerhalb eines Jahres nach Übergabe in begründeter Weise vorgetragen werden, seine Rechte gegenüber dem Einlieferer gerichtlich geltend zu machen. Maßgeblich ist der Katalogtext in deutscher Sprache. Im Falle einer erfolgreichen Inanspruchnahme des Einlieferers erstattet Lempertz dem Erwerber ausschließlich den gesamten Kaufpreis. Darüber hinaus verpflichtet sich Lempertz für die Dauer von drei Jahren bei erwiesener Unrechtheit zur Rückgabe der Kommission, wenn das Objekt in unverändertem Zustand zurückgegeben wird.

5. Ansprüche auf Schadensersatz aufgrund eines Mangels, eines Verlustes oder einer Beschädigung des versteigerten Objektes, gleich aus welchem Rechtsgrund, oder wegen Abweichungen von Katalogangaben oder anderweitig erteilten Auskünften und wegen Verletzung von Sorgfaltspflichten nach §§ 41 ff. KGSG sind ausgeschlossen, sofern Lempertz nicht vorsätzlich oder grob fahrlässig gehandelt oder vertragswesentliche Pflichten verletzt hat; die Haftung für Schäden aus der Verletzung des Lebens, des Körpers oder der Gesundheit bleibt unberührt. Im Übrigen gilt Ziffer 4.

6. Abgabe von Geboten. **Gebote in Anwesenheit:** Der Bieter erhält gegen Vorlage seines Lichtbildausweises eine Bieternummer. Lempertz behält sich die Zulassung zur Auktion vor. Ist der Bieter Lempertz nicht bekannt, hat die Anmeldung 24 Stunden vor Beginn der Auktion schriftlich und unter Vorlage einer aktuellen Bankreferenz zu erfolgen. **Gebote in Abwesenheit:** Gebote können auch schriftlich, telefonisch oder über das Internet abgegeben werden. Aufträge für Gebote in Abwesenheit müssen Lempertz zur ordnungsgemäßen Bearbeitung 24 Stunden vor der Auktion vorliegen. Das Objekt ist in dem Auftrag mit seiner Losnummer und der Objektbezeichnung zu benennen. Bei Unklarheiten gilt die angegebene Losnummer. Der Auftrag ist vom Auftraggeber zu unterzeichnen. Die Bestimmungen über Widerrufs- und Rückgaberecht bei Fernabsatzverträgen (§ 312b-d BGB) finden keine Anwendung. **Telefongebote:** Für das Zustandekommen und die Aufrechterhaltung der Verbindung kann nicht eingestanden werden. Mit Abgabe des Auftrages erklärt sich der Bieter damit einverstanden, dass der Bietvorgang aufgezeichnet werden kann. **Gebote über das Internet:** Sie werden von Lempertz nur angenommen, wenn der Bieter sich zuvor über das Internetportal registriert hat. Die Gebote werden von Lempertz wie schriftlich abgegebene Gebote behandelt.

7. Durchführung der Auktion: Der Zuschlag wird erteilt, wenn nach dreimaligem Aufruf eines Gebotes kein höheres Gebot abgegeben wird. Der Versteigerer kann sich den Zuschlag vorbehalten oder verweigern, wenn ein besonderer Grund vorliegt. Wenn mehrere Personen zugleich dasselbe Gebot abgeben und nach dreimaligem Aufruf kein höheres Gebot erfolgt, entscheidet das Los. Der Versteigerer kann den erteilten Zuschlag zurücknehmen und die Sache erneut ausbieten, wenn irrtümlich ein rechtzeitig abgegebenes höheres Gebot übersehen und dies vom Bieter sofort beanstandet worden ist oder sonst Zweifel über den Zuschlag bestehen.

Schriftliche Gebote werden von Lempertz nur in dem Umfang ausgeschöpft, der erforderlich ist, um ein anderes Gebot zu überbieten. Der Versteigerer kann für den Einlieferer bis zum vereinbarten Limit bieten, ohne dies anzuzeigen und unabhängig davon, ob andere Gebote abgegeben werden. Wenn trotz abgegebenen Gebots kein Zuschlag erteilt worden ist, haftet der Versteigerer dem Bieter nur bei Vorsatz oder grober Fahrlässigkeit.

8. Mit Zuschlag kommt der Vertrag zwischen Versteigerer und Bieter zustande (§ 156 S. 1 BGB). Der Zuschlag verpflichtet zur Abnahme. Sofern ein Zuschlag unter Vorbehalt erteilt wurde, ist der Bieter an sein Gebot bis vier Wochen nach der Auktion gebunden, wenn er nicht unverzüglich nach Erteilung des Zuschlages von dem Vorbehaltzuschlag zurücktritt. Mit der Erteilung des Zuschlages gehen Besitz und Gefahr an der versteigerten Sache unmittelbar auf den Bieter/Ersteigerer über, das Eigentum erst bei vollständigem Zahlungseingang.

9. **Auf den Zuschlagspreis wird ein Aufgeld von 25 % zuzüglich 19 % Umsatzsteuer nur auf das Aufgeld erhoben, auf den über € 400.000 hinausgehenden Betrag reduziert sich das Aufgeld auf 20 % (Differenzbesteuerung).**

Bei differenzbesteuerten Objekten, die mit N gekennzeichnet sind, wird zusätzlich die Einfuhrumsatzsteuer in Höhe von 7 % berechnet.

Für Katalogpositionen, die mit R gekennzeichnet sind, wird die gesetzliche Umsatzsteuer von 19 % auf den Zuschlagspreis + Aufgeld berechnet (Regelbesteuerung).

Von der Umsatzsteuer befreit sind Ausfuhrlieferungen in Drittländer (d.h. außerhalb der EU) und – bei Angabe der Umsatzsteuer-Identifikationsnummer – auch an Unternehmen in EU-Mitgliedsstaaten. Für Originalkunstwerke, deren Urheber noch leben oder nach dem 31.12.1948 verstorben sind, wird zur Abgeltung des gemäß § 26 UrhG zu entrichtenden Folgerechts eine Gebühr in Höhe von 1,8 % auf den Hammerpreis erhoben. Die Gebühr beträgt maximal € 12.500. Nehmen Auktionsteilnehmer ersteigerte Objekte selber in Drittländer mit, wird ihnen die Umsatzsteuer erstattet, sobald Lempertz Ausfuhr- und Abnehmernachweis vorliegen. Während oder unmittelbar nach der Auktion ausgestellte Rechnungen bedürfen der Nachprüfung; Irrtum vorbehalten.

10. Persönlich an der Auktion teilnehmende Ersteigerer haben den Endpreis (Zuschlagspreis zuzüglich Aufgeld + MwSt.) im unmittelbaren Anschluss an die Auktion an Lempertz zu zahlen; Die Zahlung auswärtiger Ersteher, die schriftlich geboten haben oder vertreten worden sind, gilt unbeschadet sofortiger Fälligkeit bei Eingang binnen 10 Tagen nach Rechnungsdatum noch nicht als verspätet. Überweisungen sind in Euro zu tätigen. Der Antrag auf Umschreibung einer Rechnung auf einen anderen Kunden als den Bieter muss unmittelbar im Anschluss an die Auktion abgegeben werden. Lempertz behält sich die Durchführung der Umschreibung vor.

11. Bei Zahlungsverzug werden 1 % Zinsen auf den Bruttopreis pro Monat berechnet. Lempertz kann bei Zahlungsverzug wahlweise Erfüllung des Kaufvertrages oder nach Fristsetzung Schadensersatz statt der Leistung verlangen. Der Schadensersatz kann in diesem Falle auch so berechnet werden, dass die Sache nochmals versteigert wird und der säumige Ersteigerer für einen Mindererlös gegenüber der vorangegangenen Versteigerung und für die Kosten der wiederholten Versteigerung einschließlich des Aufgeldes einzustehen hat.

12. Die Ersteigerer sind verpflichtet, ihre Erwerbung sofort nach der Auktion in Empfang zu nehmen. Lempertz haftet für versteigerte Objekte nur für Vorsatz oder grobe Fahrlässigkeit. Ersteigerte Objekte werden erst nach vollständigem Zahlungseingang ausgeliefert. Eine Versendung erfolgt ausnahmslos auf Kosten und Gefahr des Ersteigerers. Lempertz ist berechtigt, nicht abgeholte Objekte vier Wochen nach der Auktion im Namen und auf Rechnung des Ersteigerers bei einem Spediteur einlagern und versichern zu lassen. Bei einer Selbsteinlagerung durch Lempertz werden 1 % p.a. des Zuschlagspreises für Versicherungs- und Lagerkosten berechnet.

13. Erfüllungsort und Gerichtsstand, sofern er vereinbart werden kann, ist Köln. Es gilt deutsches Recht; Das Kulturgutschutzgesetz wird angewandt. Das UN-Übereinkommen über Verträge des internationalen Warenkaufs (CISG) findet keine Anwendung. Sollte eine der Bestimmungen ganz oder teilweise unwirksam sein, so bleibt die Gültigkeit der übrigen davon unberührt.

Henrik Hanstein, öffentlich bestellter und vereidigter Auktionator
Takuro Ito, Kilian Jay von Seldeneck, Kunstversteigerer

Conditions of sale

1. The art auction house, Kunsthaus Lempertz KG (henceforth referred to as Lempertz), conducts public auctions in terms of § 383 paragraph 3 sentence 1 of the Civil Code as commissioning agent on behalf of the accounts of submitters, who remain anonymous. With regard to its auctioneering terms and conditions drawn up in other languages, the German version remains the official one.

2. The auctioneer reserves the right to divide or combine any catalogue lots or, if it has special reason to do so, to offer any lot for sale in an order different from that given in the catalogue or to withdraw any lot from the sale.

3. All lots put up for sale may be viewed and inspected prior to the auction. The catalogue specifications and related specifications appearing on the internet, which have both been compiled in good conscience, do not form part of the contractually agreed conditions. These specifications have been derived from the status of the information available at the time of compiling the catalogue. They do not serve as a guarantee in legal terms and their purpose is purely in the information they provide. The same applies to any reports on an item's condition or any other information, either in oral or written form. Certificates or certifications from artists, their estates or experts relevant to each case only form a contractual part of the agreement if they are specifically mentioned in the catalogue text. The state of the item is generally not mentioned in the catalogue. Likewise missing specifications do not constitute an agreement on quality. All items are used goods.

4. Warranty claims are excluded. In the event of variances from the catalogue descriptions, which result in negation or substantial diminution of value or suitability, and which are reported with due justification within one year after handover, Lempertz nevertheless undertakes to pursue its rights against the seller through the courts; in the event of a successful claim against the seller, Lempertz will reimburse the buyer only the total purchase price paid. Over and above this, Lempertz undertakes to reimburse its commission within a given period of three years after the date of the sale if the object in question proves not to be authentic.

5. Claims for compensation as the result of a fault or defect in the object auctioned or damage to it or its loss, regardless of the legal grounds, or as the result of variances from the catalogue description or statements made elsewhere due to violation of due diligence according to §§ 41 ff. KGSG are excluded unless Lempertz acted with wilful intent or gross negligence; the liability for bodily injury or damages caused to health or life remains unaffected. In other regards, point 4 applies.

6. Submission of bids. Bids in attendance: The floor bidder receives a bidding number on presentation of a photo ID. Lempertz reserves the right to grant entry to the auction. If the bidder is not known to Lempertz, registration must take place 24 hours before the auction is due to begin in writing on presentation of a current bank reference. Bids in absentia: Bids can also be submitted either in writing, telephonically or via the internet. The placing of bids in absentia must reach Lempertz 24 hours before the auction to ensure the proper processing thereof. The item must be mentioned in the bid placed, together with the lot number and item description. In the event of ambiguities, the listed lot number becomes applicable. The placement of a bid must be signed by the applicant. The regulations regarding revocations and the right to return the goods in the case of long distance agreements (§ 312b-d of the Civil Code) do not apply. Telephone bids: Establishing and maintaining a connection cannot be vouched for. In submitting a bid placement, the bidder declares that he agrees to the recording of the bidding process. Bids via the internet: They will only be accepted by Lempertz if the bidder registered himself on the internet website beforehand. Lempertz will treat such bids in the same way as bids in writing.

7. Carrying out the auction: The hammer will come down when no higher bids are submitted after three calls for a bid. In extenuating circumstances, the auctioneer reserves the right to bring down the hammer or he can refuse to accept a bid. If several individuals make the same bid at the same time, and after the third call, no higher bid ensues, then the ticket becomes the deciding factor. The auctioneer can retract his acceptance of the bid and auction the item once more if a higher bid that was submitted on time, was erroneously overlooked and immediately queried by the bidder, or if any doubts regarding its acceptance arise. Written bids are only played

to an absolute maximum by Lempertz if this is deemed necessary to outbid another bid. The auctioneer can bid on behalf of the submitter up to the agreed limit, without revealing this and irrespective of whether other bids are submitted. Even if bids have been placed and the hammer has not come down, the auctioneer is only liable to the bidder in the event of premeditation or gross negligence.

8. Once a lot has been knocked down, the successful bidder is obliged to buy it. If a bid is accepted conditionally, the bidder is bound by his bid until four weeks after the auction unless he immediately withdraws from the conditionally accepted bid. From the fall of the hammer, possession and risk pass directly to the buyer, while ownership passes to the buyer only after full payment has been received.

9. Up to a hammer price of € 400,000 a premium of 25 % calculated on the hammer price plus 19 % value added tax (VAT) calculated on the premium only is levied. The premium will be reduced to 20 % (plus VAT) on any amount surpassing € 400,000 (margin scheme).

On lots which are characterized by N, an additional 7 % for import tax will be charged.

On lots which are characterized by an R, the buyer shall pay the statutory VAT of 19 % on the hammer price and the buyer's premium (regular scheme).

Exports to third (i.e. non-EU) countries will be exempt from VAT, and so will be exports made by companies from other EU member states if they state their VAT identification number. For original works of art, whose authors are either still alive or died after 31.12.1948, a charge of 1.8 % on the hammer price will be levied for the droit de suite. The maximum charge is € 12,500. If a buyer exports an object to a third country personally, the VAT will be refunded, as soon as Lempertz receives the export and import papers. All invoices issued on the day of auction or soon after remain under provision.

10. Successful bidders attending the auction in person shall forthwith upon the purchase pay to Lempertz the final price (hammer price plus premium and VAT) in Euro. Payments by foreign buyers who have bid in writing or by proxy shall also be due forthwith upon the purchase, but will not be deemed to have been delayed if received within ten days of the invoice date. Bank transfers are to be exclusively in Euros. The request for an alteration of an auction invoice to a person other than the bidder has to be made immediately after the auction. Lempertz however reserves the right to refuse such a request if it is deemed appropriate.

11. In the case of payment default, Lempertz will charge 1% interest on the outstanding amount of the gross price per month.. If the buyer defaults in payment, Lempertz may at its discretion insist on performance of the purchase contract or, after allowing a period of grace, claim damages instead of performance. In the latter case, Lempertz may determine the amount of the damages by putting the lot or lots up for auction again, in which case the defaulting buyer will bear the amount of any reduction in the proceeds compared with the earlier auction, plus the cost of resale, including the premium.

12. Buyers must take charge of their purchases immediately after the auction. Once a lot has been sold, the auctioneer is liable only for wilful intent or gross negligence. Lots will not, however, be surrendered to buyers until full payment has been received. Without exception, shipment will be at the expense and risk of the buyer. Purchases which are not collected within four weeks after the auction may be stored and insured by Lempertz on behalf of the buyer and at its expense in the premises of a freight agent. If Lempertz stores such items itself, it will charge 1 % of the hammer price for insurance and storage costs.

13. As far as this can be agreed, the place of performance and jurisdiction is Cologne. German law applies; the German law for the protection of cultural goods applies; the provisions of the United Nations Convention on Contracts for the International Sale of Goods (CISG) are not applicable. Should any provision herein be wholly or partially ineffective, this will not affect the validity of the remaining provisions.

Henrik Hanstein, sworn public auctioneer
Takuro Ito, Kilian Jay von Seldeneck, auctioneers

Conditions de vente aux enchères

1. Kunsthaus Lempertz KG (appelée Lempertz dans la suite du texte) organise des ventes aux enchères publiques d'après le paragraphe 383, alinéa 3, phrase 1 du code civil allemand en tant que commissionnaire pour le compte de dépositaires, dont les noms ne seront pas cités. Les conditions des ventes aux enchères ont été rédigées dans plusieurs langues, la version allemande étant la version de référence.

2. Le commissaire-priseur se réserve le droit de réunir les numéros du catalogue, de les séparer, et s'il existe une raison particulière, de les offrir ou de les retirer en-dehors de leur ordre.

3. Tous les objets mis à la vente aux enchères peuvent être examinés et contrôlés avant celle-ci. Les indications présentes dans le catalogue ainsi que dans la présentation Internet correspondante, établies en conscience et sous réserve d'erreurs ou omissions de notre part, ne constituent pas des éléments des conditions stipulées dans le contrat. Ces indications dépendent des avancées de la science au moment de l'élaboration de ce catalogue. Elles ne constituent en aucun cas des garanties juridiques et sont fournies exclusivement à titre informatif. Il en va de même pour les descriptions de l'état des objets et autres renseignements fournis de façon orale ou par écrit. Les certificats ou déclarations des artistes, de leur succession ou de tout expert compétent ne sont considérés comme des objets du contrat que s'ils sont mentionnés expressément dans le texte du catalogue. L'état de conservation d'un objet n'est pas mentionné dans son ensemble dans le catalogue, de telle sorte que des indications manquantes ne peuvent constituer une caractéristique en tant que telle. Les objets sont d'occasion. Tous les objets étant vendus dans l'état où ils se trouvent au moment de leur adjudication.

4. Revendications pour cause de garantie sont exclus. Dans le cas de dérogations par rapport aux descriptions contenues dans les catalogues susceptibles d'anéantir ou de réduire d'une manière non négligeable la valeur ou la validité d'un objet et qui sont exposées d'une manière fondée en l'espace d'un an suivant la remise de l'objet, Lempertz s'engage toutefois à faire valoir ses droits par voie judiciaire à l'encontre du déposant. Le texte du catalogue en langue allemande fait foi. Dans le cas d'une mise à contribution du déposant couronnée de succès, Lempertz ne remboursera à l'acquéreur que la totalité du prix d'achat payé. En outre, Lempertz s'engage pendant une durée de trois ans au remboursement de la provision en cas d'inauthenticité établie.

5. Toutes prétentions à dommages-intérêts résultant d'un vice, d'une perte ou d'un endommagement de l'objet vendu aux enchères, pour quelque raison juridique que ce soit ou pour cause de dérogations par rapport aux indications contenues dans le catalogue ou de renseignements fournis d'une autre manière tout comme une violation des obligations de diligence §§ 41 ff. KGSG sont exclues dans la mesure où Lempertz n'ait ni agi avec préméditation ou par négligence grossière ni enfreint à des obligations essentielles du contrat. La responsabilité pour dommages de la violation de la vie, du corps ou de la santé ne sont pas affectées. Pour le reste, l'alinéa 4 est applicable.

6. Placement des enchères. Enchères en présence de l'enchérisseur : l'enchérisseur en salle se voit attribuer un numéro d'enchérisseur sur présentation de sa carte d'identité. Lempertz décide seul d'autoriser ou non l'enchère. Si l'enchérisseur n'est pas encore connu de Lempertz, son inscription doit se faire dans les 24 heures précédant la vente aux enchères, par écrit et sur présentation de ses informations bancaires actuelles. Enchères en l'absence de l'enchérisseur : des enchères peuvent également être placées par écrit, par téléphone ou par le biais d'Internet. Ces procurations doivent être présentées conformément à la réglementation 24 heures avant la vente aux enchères. L'objet doit y être nommé, ainsi que son numéro de lot et sa description. En cas d'ambiguïté, seul le numéro de lot indiqué sera pris en compte. Le donneur d'ordre doit signer lui-même la procuration. Les dispositions concernant le droit de rétraction et celui de retour de l'objet dans le cadre de ventes par correspondance (§ 312b-d du code civil allemand) ne s'appliquent pas ici. Enchères par téléphone : l'établissement de la ligne téléphonique ainsi que son maintien ne peuvent être garantis. Lors de la remise de son ordre, l'enchérisseur accepte que le déroulement de l'enchère puisse être enregistré. Placement d'une enchère par le biais d'Internet : ces enchères ne seront prises en compte par Lempertz que si l'enchérisseur s'est au préalable inscrit sur le portail Internet. Ces enchères seront traitées par Lempertz de la même façon que des enchères placées par écrit.

7. Déroulement de la vente aux enchères. L'adjudication a lieu lorsque trois appels sont restés sans réponse après la dernière offre. Le commissaire-priseur peut réserver l'adjudication ou la refuser s'il indique une raison valable. Si plusieurs personnes placent simultanément une enchère identique et que personne d'autre ne place d'enchère plus haute après trois appels successifs, le hasard décidera de la personne qui remportera l'enchère. Le commissaire-priseur peut reprendre l'objet adjudiqué et le remettre en vente si une enchère supérieure placée à temps lui a échappé par erreur et que l'enchérisseur a fait une réclamation immédiate ou que des doutes existent

au sujet de l'adjudication (§ 2, alinéa 4 du règlement allemand sur les ventes aux enchères). Des enchères écrites ne seront placées par Lempertz que dans la mesure nécessaire pour dépasser une autre enchère. Le commissaire-priseur ne peut enchérir pour le dépositaire que dans la limite convenue, sans afficher cette limite et indépendamment du placement ou non d'autres enchères. Si, malgré le placement d'enchères, aucune adjudication n'a lieu, le commissaire-priseur ne pourra être tenu responsable qu'en cas de faute intentionnelle ou de négligence grave.

8. L'adjudication engage l'enchérisseur. Dans la mesure où une adjudication sous réserve a été prononcée, l'enchérisseur est lié à son enchère jusqu'à quatre semaines après la fin de la vente aux enchères ou après réception des informations dans le cas d'enchères par écrit, s'il ne se désiste pas immédiatement après la fin de la vente.

9. Dans le cadre de la vente aux enchères un agio de 25 % s'ajout au prix d'adjudication, ainsi qu'une TVA de 19 % calculée sur le agio si ce prix est inférieur à € 400.000; pour tout montant supérieur à € 400.000 la commission sera diminuée à 20 % (régime de la marge bénéficiaire).

Dans le cas des objets soumis au régime de la marge bénéficiaire et marqués par N des frais supplémentaires de 7% pour l'importation seront calculés.

Pour les objets de catalogue caractérisés par R, un agio de 24% est prélevé sur le prix d'adjudication ce prix facture net (prix d'adjudication agio) est majoré de la T.V.A. légale de 7% pour les tableaux, graphiques originaux, sculptures et pièces de collection, et de 19% pour les arts décoratifs appliqués (imposition régulière).

Sont exemptées de la T.V.A., les livraisons d'exportation dans des pays tiers (en dehors de l'UE) et – en indiquant le numéro de T.V.A. intracommunautaire – aussi à destination d'entreprises dans d'autres pays membres de l'UE. Si les participants à une vente aux enchères emmènent eux-mêmes les objets achetés aux enchères dans des pays tiers, la T.V.A. leur est remboursée dès que Lempertz se trouve en possession du certificat d'exportation et d'acheteur. Pour des œuvres originales dont l'auteur est décédé après le 31.12.1948 ou est encore vivant, conformément à § 26 UrhG concernant l'indemnisation à percevoir sur le droit de suite s'élève à 1,8% du prix adjugé. L'indemnisation ne dépassera pas un montant maximale de € 12.500. Les factures établies pendant ou directement après la vente aux enchères d'œuvres d'art doivent faire l'objet d'une vérification, sous réserve d'erreur.

10. Les adjudicataires participant personnellement à la vente aux enchères sont tenus de payer le prix final (prix d'adjudication plus agio + T.V.A.) directement après l'adjudication à Lempertz. Le paiement par des adjudicataires externes, qui ont enchéri par écrit ou ont été représentés, est, nonobstant son exigibilité immédiate, considéré comme n'étant pas en retard à sa réception dans les 10 jours suivant la date de la facture. Les virements bancaires se font uniquement en euro. Nous n'acceptons pas les chèques. Dans le cas d'un paiement en liquide s'élevant à un montant égal à € 15.000 ou supérieur à cela, Lempertz est obligé par le § 3 de la loi concernant le blanchiment d'argent de faire une copie de la carte d'identité de l'acheteur. Ceci est valable aussi dans le cas où plusieurs factures de l'acheteur s'élèvent à un montant total de € 15.000 ou plus. Tout demande de réécriture d'une facture à un autre nom de client que celui de l'enchérisseur doit se faire directement après la fin de la vente aux enchères. Lempertz effectue la réalisation de cette nouvelle facture.

11. Pour tout retard de paiement, des intérêts à hauteur de 1 % du prix brut seront calculés chaque mois. En cas de retard de paiement, Lempertz peut à son choix exiger l'exécution du contrat d'achat ou, après fixation d'un délai, exiger des dommages-intérêts au lieu d'un service fourni. Les dommages-intérêts pourront dans ce cas aussi être calculés de la sorte que la chose soit vendue une nouvelle fois aux enchères et que l'acheteur défaillant réponde du revenu moindre par rapport à la vente aux enchères précédentes et des frais pour une vente aux enchères répétée, y compris l'agio.

12. Les adjudicataires sont obligés de recevoir leur acquisition directement après la vente aux enchères. Le commissaire-priseur n'est responsable des objets vendus qu'en cas de préméditation ou de négligence grossière. Les objets achetés aux enchères ne seront toutefois livrés qu'après réception du paiement intégral. L'expédition a lieu exclusivement aux frais et aux risques de l'adjudicataire. Lempertz a le droit de mettre des objets non enlevés en entrepôt et de les assurer au nom et pour le compte de l'adjudicataire chez un commissionnaire de transport quatre semaines après la vente aux enchères. En cas de mise en entrepôt par Lempertz même, 1% du prix d'adjudication sera facturé par an pour les frais d'assurance et d'entreposage.

13. Le lieu d'exécution et le domicile de compétence – s'il peut être convenu – est Cologne. Le droit allemand est applicable. La loi pour la protection des biens culturels est applicable. Les prescriptions du CISG ne sont pas applicables. Au cas où l'une des clauses serait entièrement ou partiellement inefficace, la validité des dispositions restantes en demeure in affectée.

Henrik Hanstein, commissaire-priseur désigné et assermenté
Takuro Ito, Kilian Jay von Seldeneck, commissaires-priseurs

Versand

Der Versand der ersteigerten Objekte wird auf Ihre Kosten und Gefahr nach Zahlungseingang vorgenommen.

Sie finden auf der Rechnung einen entsprechenden Hinweis bezüglich Versand und Versicherung.

Eventuell erforderliche Exportgenehmigungen können gern durch Lempertz oder einen Spediteur beantragt werden.

Bei Rückfragen:

Farah von Depka

Tel +49.221.925729-41

shipping@lempertz.com

Linda Kieven

Tel +49.221.925729-19

shipping@lempertz.com

- Fedex / Post (mit Versicherung)
- Spedition
- mit Versicherung
- ohne Versicherung
- Abholung persönlich

Versand an:

Telefon / E-Mail

Rechnungsempfänger (wenn abweichend von Versandadresse)

Datum und Unterschrift

Shipment

Kunsthau Lempertz is prepared to instruct Packers and Shippers on your behalf and at your risk and expense upon receipt of payment.

You will receive instructions on shipping and insurance with your invoice.

Should you require export licenses, Lempertz or the shipper can apply for them for you.

For information:

Farah von Depka

Tel +49.221.925729-41

shipping@lempertz.com

Linda Kieven

Tel +49.221.925729-19

shipping@lempertz.com

- Fedex / Post (with insurance)
- Shippers / Carriers
- With insurance
- Without insurance
- Personal collection

Lots to be packed and shipped to:

Telephone / e-mail

Charges to be forwarded to:

Date and signature

Mehrwertsteuer VAT

Umsatzsteuer-Identifikationsnummer des Kunsthaus Lempertz KG:
DE 279 519 593. VAT No.
Amtsgericht Köln HRA 1263.

Buchhaltung: T +49.221.92572940

Export Export

Von der Mehrwertsteuer befreit sind Ausfuhrlieferungen in Drittländer (d.h. außerhalb der EU) und – bei Angabe der Umsatzsteuer-Identifikationsnummer – auch an Unternehmen in anderen EU-Mitgliedsstaaten. Nehmen Auktionsteilnehmer ersteigerte Gegenstände selber in Drittländer mit, wird ihnen die MwSt. erstattet, sobald dem Versteigerer der Ausfuhr- und Abnehmernachweis vorliegen.

Ausfuhr aus der EU:

Bei Ausfuhr aus der EU sind das Europäische Kulturgüterschutzabkommen von 1993 und die UNESCO-Konvention von 1970 zu beachten. Bei Kunstwerken, die älter als 50 Jahre sind und folgende Wertgrenzen übersteigen, ist eine Genehmigung des Landes-kultusministeriums erforderlich:

- Gemälde ab einem Wert von 150.000 Euro
- Aquarelle, Gouachen und Pastelle ab 30.000 Euro
- Skulpturen ab 50.000 Euro
- Antiquitäten ab 50.000 Euro

Ausfuhr innerhalb der EU:

Seit 6.8.2016 gilt das neue deutsche Kulturgutschutzgesetz für Exporte auch in ein anderes EU-Land. Bei Kunstwerken, die älter als 75 Jahre sind und folgende Wertgrenzen übersteigen, ist eine Genehmigung des Landes-kultusministeriums erforderlich:

- Gemälde ab einem Wert von 300.000 Euro
- Aquarelle, Gouachen und Pastelle ab 100.000 Euro
- Skulpturen ab 100.000 Euro
- Antiquitäten ab 100.000 Euro

Die Ausfuhrgenehmigung wird durch Lempertz beim Landeskultusministerium NRW beantragt und wird in der Regel binnen 10 Tagen erteilt.
Bei Fragen wenden Sie sich bitte an: legal@lempertz.com

Mit einem † gekennzeichnete Objekte wurden unter Verwendung von Materialien hergestellt, für die beim Export in Länder außerhalb des EU-Vertragsgebietes eine Genehmigung nach CITES erforderlich ist. Wir machen darauf aufmerksam, dass eine Genehmigung im Regelfall nicht erteilt wird.

Für Rückfragen: T +49.221.92572919

Exports to third (i.e. non-EU) countries will be exempt from VAT, and so will be exports made by companies from other EU member states if they state their VAT-ID no. Persons who have bought an item at auction and export it as personal luggage to any third country will be refunded the VAT as soon as the form certifying the exportation and the exporter's identity has been returned to the auctioneer. Our staff will be glad to advise you on the export formalities.

Exports to non-EU countries:

Export to countries outside the European Community are subject to the restrictions of the European Agreement for the Protection of Cultural Heritage from 1993 and the UNESCO convention from 1970. Art works older than 50 years and exceeding the following values require an export license from the State Ministry of Culture:

- *paintings worth more than 150,000 euros*
- *watercolours, gouaches and pastel drawings more than 30,000 euros*
- *sculptures more than 50,000 euros*
- *antiques more than 50,000 euros*

Export within the EU:

As of 6.8.2016, exports within the EU are subject to the German law for the protection of cultural goods. Art works older than 75 years and exceeding the following values require an export license from the State Ministry of Culture:

- *paintings worth more than 300,000 euros*
- *watercolours, gouaches, and pastels more than 100,000 euros*
- *sculptures more than 100,000 euros*
- *antiques more than 100,000 euros*

Lempertz applies for the export licenses from the North-Rhine Westphalian State Ministry of Culture which are usually granted within 10 days.

If you have any questions, please feel free to contact: legal@lempertz.com

Objects marked † are made using materials which require a CITES licence for export outside of EU contract territory. We would like to inform you that such licences are usually not granted.

For inquiries: T +49.221.92572919

Für den Export von Kulturgütern (d.h. Kulturgüter) sind die Bestimmungen der UNESCO-Konvention von 1970 zu beachten. Für den Export von Kulturgütern in andere EU-Mitgliedsstaaten sind die Bestimmungen des Europäischen Kulturgüterschutzabkommens von 1993 zu beachten. Für den Export von Kulturgütern in andere EU-Mitgliedsstaaten sind die Bestimmungen des Europäischen Kulturgüterschutzabkommens von 1993 zu beachten. Für den Export von Kulturgütern in andere EU-Mitgliedsstaaten sind die Bestimmungen des Europäischen Kulturgüterschutzabkommens von 1993 zu beachten. Für den Export von Kulturgütern in andere EU-Mitgliedsstaaten sind die Bestimmungen des Europäischen Kulturgüterschutzabkommens von 1993 zu beachten.

zu den EU-Mitgliedsstaaten:

Für den Export von Kulturgütern in andere EU-Mitgliedsstaaten sind die Bestimmungen des Europäischen Kulturgüterschutzabkommens von 1993 zu beachten. Für den Export von Kulturgütern in andere EU-Mitgliedsstaaten sind die Bestimmungen des Europäischen Kulturgüterschutzabkommens von 1993 zu beachten. Für den Export von Kulturgütern in andere EU-Mitgliedsstaaten sind die Bestimmungen des Europäischen Kulturgüterschutzabkommens von 1993 zu beachten. Für den Export von Kulturgütern in andere EU-Mitgliedsstaaten sind die Bestimmungen des Europäischen Kulturgüterschutzabkommens von 1993 zu beachten.

- Wert über 150.000 Euro
- Wert über 30.000 Euro
- Wert über 50.000 Euro
- Wert über 50.000 Euro

zu den EU-Mitgliedsstaaten:

Für den Export von Kulturgütern in andere EU-Mitgliedsstaaten sind die Bestimmungen des Europäischen Kulturgüterschutzabkommens von 1993 zu beachten. Für den Export von Kulturgütern in andere EU-Mitgliedsstaaten sind die Bestimmungen des Europäischen Kulturgüterschutzabkommens von 1993 zu beachten. Für den Export von Kulturgütern in andere EU-Mitgliedsstaaten sind die Bestimmungen des Europäischen Kulturgüterschutzabkommens von 1993 zu beachten. Für den Export von Kulturgütern in andere EU-Mitgliedsstaaten sind die Bestimmungen des Europäischen Kulturgüterschutzabkommens von 1993 zu beachten.

- Wert über 300.000 Euro
- Wert über 100.000 Euro
- Wert über 100.000 Euro
- Wert über 100.000 Euro

Der Export von Kulturgütern in andere EU-Mitgliedsstaaten ist nur dann möglich, wenn eine Genehmigung des Landes-kultusministeriums vorliegt.

Bei Fragen wenden Sie sich bitte an: legal@lempertz.com

Die Bestimmungen der UNESCO-Konvention von 1970 sind für den Export von Kulturgütern in andere EU-Mitgliedsstaaten zu beachten. Die Bestimmungen der UNESCO-Konvention von 1970 sind für den Export von Kulturgütern in andere EU-Mitgliedsstaaten zu beachten. Die Bestimmungen der UNESCO-Konvention von 1970 sind für den Export von Kulturgütern in andere EU-Mitgliedsstaaten zu beachten. Die Bestimmungen der UNESCO-Konvention von 1970 sind für den Export von Kulturgütern in andere EU-Mitgliedsstaaten zu beachten.

Signaturen und Marken Signatures and marks

Die Signatur des Künstlers oder des Herstellers ist für die Authentifizierung des Kunstwerks erforderlich. Bilder ohne Signatur oder Monogramm können nicht sicher zugeschrieben werden. – Provenienzangaben beruhen meist auf Angaben der Einlieferer.

Signatures have been conscientiously noted. They are additions by the artists or makers in their own hand. Paintings without signature or monogram cannot be attributed definitely. – Information regarding provenance is mostly supplied by the consigner.

Location and Parking

Zu Lempertz finden Sie unter www.lempertz.com, gehen Sie auf Kontakt und dann auf Standorte; Anlieferung: Kronengasse 1; Wir empfehlen das Parkhaus Cäcilienstraße 32.
U-Bahn Station Neumarkt (Linien 1, 3, 4, 7, 9, 16, 18)

Directions to Lempertz can be found on www.lempertz.com under locations/contact.

We recommend Motel One, including parking lot right next to Lempertz

Delivery: Kronengasse 1

Underground station Neumarkt (Lines 1, 3, 4, 7, 9, 16, 18)

Photographie Photography

Saša Fuis Photographie, Köln

Layout und Design Layout and Design

Lemke Werbeagentur GmbH & Co. KG, Köln

Druck Print

Schefenacker Medien GmbH & Co. KG, Esslingen

Katalogbearbeitung



Drs. Erwin van Pruissen
T. +49 221 925729-37
vanpruissen@lempertz.com



Anna Chiffers M.A.
T. +49 221 925729-36
chiffers@lempertz.com



Adrian Heindricks B.A.
T +49 221 925729-74
heindricks@lempertz.com



Filialen *Branches*

Berlin
Kilian Jay von Seldeneck
Irmgard Canty M.A.
Christine Goerlipp M.A.
Melanie Jaworski
Poststraße 22
D-10178 Berlin
T +49.30.27876080
F +49.30.27876086
berlin@lempertz.com

Brüssel *Brussels*
Henri Moretus Plantin de Bouchout
Raphaël Sachsenberg M.A.
Emilie Jolly M.A.
Dr. Hélène Mund (Alte Meister)
Lempertz, 1798, SA
Grote Hertstraat 6 rue du Grand Cerf
B-1000 Brussels
T +32.2.5140586
F +32.2.5114824
bruxelles@lempertz.com

München *Munich* w
Emmarentia Bahlmann
Hans-Christian von Wartenberg M.A.
St.-Anna-Platz 3
D-80538 München
T +49.89.98107767
F +49.89.21019695
muenchen@lempertz.com

Repräsentanten *Representatives*

Mailand *Milan*
Carlotta Mascherpa M.A.
T +39.339.8668526
milano@lempertz.com

London
William Laborde
T +44.7912.674917
london@lempertz.com

Zürich *Zurich*
Nicola Gräfin zu Stolberg
T +41.44.4221911
F +41.44.4221910
stolberg@lempertz.com

Wien *Vienna*
Antonia Bahlmann B.A.
T +49.15773506823
wien@lempertz.com

Paris
Raphael Sachsenberg
T +32.488.284120
sachsenberg@lempertz.com

Kalifornien *California*
Andrea Schaffner-Dittler M.A.
T +1.650.9245846
dittler@lempertz.com

Besitzerverzeichnis *Owner directory*

(1) 471a, 483, 491, 496, 497; (2) 416, 417, 418, 419, 420, 421, 422, 423, 424, 425, 426, 427, 428, 429, 430, 431, 432, 433, 434, 435; (3) 486, 487, 492, 493; (4) 465, 471; (5) 250, 251, 252, 253, 254, 255, 256, 257, 258, 259, 260, 261, 262, 263, 264, 265, 266, 267, 268, 269, 270, 271, 272, 273, 274, 275, 276, 277, 278, 279, 280, 281, 282, 283, 284, 285, 286, 287, 288, 289, 290, 291, 292, 293, 294, 295, 296, 297, 298, 299, 300, 301, 302, 303, 304, 305, 306, 307, 308, 309, 310, 311, 312, 313, 314, 315, 316, 317, 318, 319, 320, 321, 322, 323, 324, 325, 326, 327, 328, 329, 330, 331, 332, 333, 334, 335, 336, 337, 338, 339, 340, 341, 342, 343, 344, 345, 346, 347, 348, 349, 350, 351, 352, 353, 354, 355, 356, 357, 358, 359, 360, 361, 362, 363, 364, 365, 366, 473, 474, 475, 476, 477, 478; (6) 479, 480, 482, 484, 485, 488, 489, 490, 494; (7) 470; (8) 463, 464; (9) 467; (10) 472; (11) 466; (12) 448, 449, 450, 451, 452, 453, 454, 455, 456, 457, 458, 459, 460, 461, 495, 498; (13) 468, 469; (14) 462; (15) 481; (16) 375, 376, 377, 378, 379, 380, 381, 382, 383, 384, 385, 386, 387, 388, 389, 390, 391, 392, 393, 394, 395, 396, 397, 398, 399, 400, 401, 402, 403, 404, 405, 406, 407, 408, 409, 410, 411, 412, 413, 414, 415; (17) 499; (18) 436, 437, 438, 439, 440, 441, 442, 443, 444, 445, 446, 447; (19) 367, 368, 369, 370, 371, 372, 373, 374

LEMPERTZ

1845

Asiatische Kunst
Asian Art
7./8. Juni 2019 Köln
Lempertz Auktion 1136

LEMPERTZ

1795

Lempertz-Auktion
Afrikanische und Ozeanische Kunst im Januar 2020
während der BRAFA in Brüssel

Einladung zu Einlieferungen

Zande-Figur

Demokratische Republik Kongo. H 45 cm.

Ergebnis / *Result*: € 35.000,-



Experten

Tim Teuten

Emilie Jolly

Kontakt

Emilie Jolly, Brüssel

brussel@lempertz.com

+32.2.514.05.86

www.lempertz.com

Lempertz-Auktionen

Kunstgewerbe und Highly Important Mortars
from the Schwarzach Collection am 17. Mai 2019 in Köln

Vorbesichtigungen: München 7./8. Mai; Köln 11. – 15. Mai

Seltener Deckelhumpen

Oslo, Ernst Peter Michelsen Røme. 1755. Qianlong-Porzellan mit Silbermontierung, H 19 cm.
Schätzpreis / *Estimate*: € 2.000 – 3.000,-



Lempertz-Auktion

Zeitgenössische Kunst am 1. Juni 2019 in Köln

Vorbesichtigungen: München 7./8. Mai; Berlin 14./15. Mai;
Köln 24. – 30. Mai

Katharina Grosse. Ohne Titel. 2014/2015

Acryl auf Leinwand, 163 x 275 cm. Schätzpreis / *Estimate*: € 120.000 – 150.000,-



Lempertz-Auktion

Photographie am 31. Mai 2019 in Köln

Vorbesichtigungen: München 7./8. Mai; Berlin 14./15. Mai;
Köln 24. – 30. Mai

Daido Moriyama. Ohne Titel (aus der Serie: Kyoku / Erotica), 2007
Gelatinesilberabzug, 44 x 58,3 cm (50,9 x 60,8 cm). Schätzpreis / *Estimate*: € 2.500,-



LEMPERTZ
1845

